

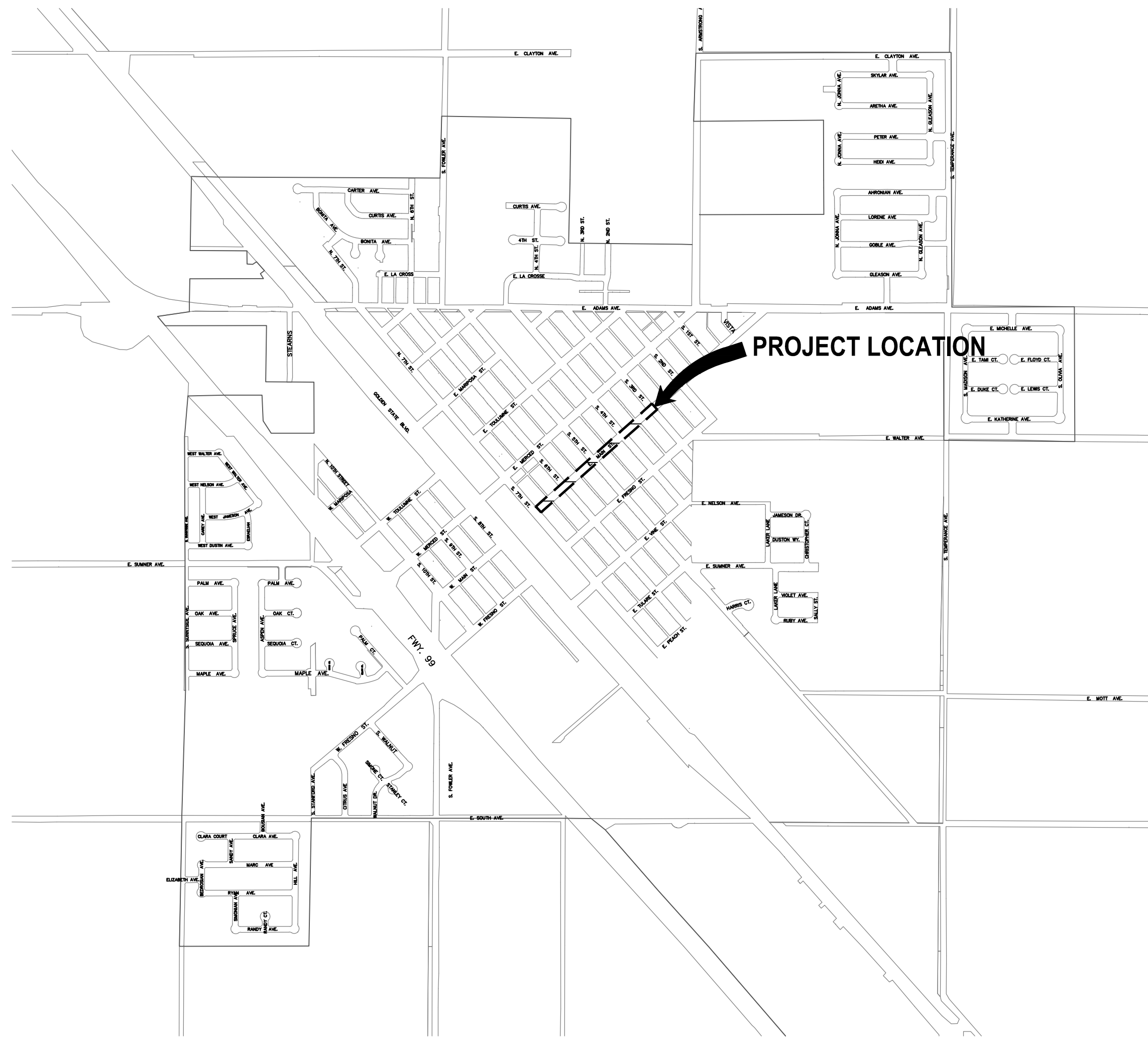
CITY OF FOWLER

DEPARTMENT OF PUBLIC WORKS

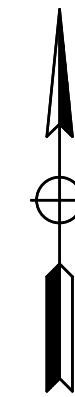
PLANS

FOR CONSTRUCTION OF
MAIN STREET IMPROVEMENTS

SHEET INDEX		
SHEET #	SHEET ID	SHEET DESCRIPTION
1	T-1	TITLE SHEET
2	X-1	TYPICAL CROSS SECTIONS
3	L-1	LAYOUT STA 10+00 TO STA 22+00
4	L-2	LAYOUT STA 22+00 TO STA 27+00
5	C-1	CURB RAMP DETAILS



CITY OF FOWLER
NTS



Know what's below.
Call before you dig.

UNDERGROUND FACILITIES SHOWN WERE LOCATED BASED ON INFORMATION PROVIDED BY UTILITY COMPANIES AND BY MEASURING SURFACE FEATURES. NO ATTEMPT WAS MADE TO LOCATE OTHER UNDERGROUND FACILITIES THAT WERE NOT READILY APPARENT FROM A VISUAL INSPECTION OF SURFACE FEATURES.

CONTRACTOR SHALL VERIFY ACTUAL DEPTH AND LOCATION OF ALL EXISTING UTILITIES PRIOR TO CONSTRUCTION....CALL "UNDERGROUND SERVICE ALERT" (U.S.A.)(TOLL FREE 811) PRIOR TO TRENCHING, GRADING, EXCAVATION, DRILLING, PIPE PUSHING, PLANTING TREES, DIGGING POST HOLES FOR FENCES, ETC.(U.S.A.) WILL SUPPLY INFORMATION OR LOCATE AND MARK ANY UNDERGROUND FACILITIES.

UTILITIES

CITY OF FOWLER PUBLIC WORKS DEPARTMENT
128. S. 5TH STREET
FOWLER, CA. 93625

PHONE PREFIX (559)

834-3113 EXT. 121

PACIFIC GAS AND ELECTRIC COMPANY
650 "O" STREET
FRESNO, CA. 93760

263-7372

FRONTIER COMMUNICATIONS
1359 "G" STREET
REEDLEY, CA. 93654

637-0666

CALIFORNIA DEPARTMENT OF TRANSPORTATION
1352 W. OLIVE AVENUE
FRESNO, CA. 93705

488-4058

CONSOLIDATED IRRIGATION DISTRICT
1728 TUCKER STREET
SELMA, CA 93662

896-1660

SKF COUNTY SANITATION DISTRICT ENGINEERING DEPARTMENT
11301 CONEJO AVENUE
KINGSBURG, CA 93631

897-6500

COMCAST CABLE
2441 N. GROVE INDUSTRIAL DRIVE
FRESNO, CA 93727

455-4580

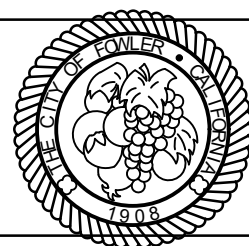
T-1



PETERS ENGINEERING GROUP

862 POLLASKY AVENUE
CLOVIS, CALIFORNIA 93612

PHONE (559) 299-1544
WWW.PETERS-ENGINEERING.COM



City of Fowler

128 S. 5TH STREET
FOWLER, CA. 93625

DESIGN	BY MV
DRAWN	BY MV
CHECKED	BY WW

MAIN STREET IMPROVEMENTS

TITLE SHEET

DISREGARD PRINTS BEARING
EARLIER REVISION DATES

REVISION DATES (PRELIMINARY STAGE ONLY)

→

LEGEND AND KEYNOTES (APPLIES TO SHEETS L-1 TO L-2)

- #

PAVEMENT DELINEATION DETAIL TO BE INSTALLED PER STATE STD. PLANS
- ME

MATCH EXIST. GRADE
- AC SAWCUT LINE
- MILL & OVERLAY
- PROP. CONCRETE
- STOP

INSTALL "STOP" PAVEMENT MARKING PER STATE STD. PLAN A24D.
- 1

PROTECT SIGN IN PLACE
- 2

PROTECT LIGHT POST IN PLACE
- 3

ADJUST MANHOLE TO GRADE
- 4

ADJUST WATER VALVE TO GRADE
- 5

INSTALL 12" CROSSWALK STRIPING (WHITE, UNLESS NOTED OTHERWISE ON PLANS)

- NOTES:
- ALL EXIST PAVEMENT DELINEATION IN CONFLICT WITH PROPOSED PAVEMENT DELINEATION SHALL BE REMOVED BY WET SANDBLASTING OR OTHER APPROVED METHODS WHICH WILL CAUSE THE LEAST POSSIBLE DAMAGE TO THE PAVEMENT.
 - ALL STRIPING WORK SHALL BE DONE IN ACCORDANCE WITH THE LATEST EDITIONS OF THE STATE OF CALIFORNIA DEPARTMENT OF TRANSPORTATION STANDARD PLANS AND SPECIFICATIONS, THE 2014 CALIFORNIA MANUAL ON UNIFORM TRAFFIC CONTROL DEVICES (2014 CALIFORNIA MUTCD), UNLESS OTHERWISE DIRECTED BY THE CITY ENGINEER.
 - ALL PAVEMENT MARKINGS, CROSSWALKS, LIMIT LINES, SHALL BE THERMOPLASTIC. TRAFFIC STRIPES SHALL BE PAINT (2 COATS) UNLESS OTHERWISE DIRECTED BY THE CITY.
 - THE CONTRACTOR IS RESPONSIBLE TO RECORD AND DOCUMENT AS NECESSARY EXISTING STRIPING, PAVEMENT MARKERS AND MARKINGS, BLUE DOT MARKERS FOR FIRE HYDRANTS IN ORDER TO REPLACE THE STRIPING, PAVEMENT MARKERS AND MARKINGS IN KIND.
 - THE PLANS ARE ACCURATE FOR STRIPING ONLY.
 - PERMANENT STRIPING, PAVEMENT MARKINGS, AND PAVEMENT MARKERS SHALL BE INSTALLED 21-30 DAYS AFTER NEW HMA IS PLACED.

David Peters

REGISTERED CIVIL ENGINEER

11/05/2020

DATE

REGISTERED PROFESSIONAL ENGINEER

DAVID M. PETERS

No. 52685

EXP. 12/31/20

CIVIL

STATE OF CALIFORNIA

SHEET NO.

3

TOTAL SHEETS

5



DWG: S:\2020\20-034\Acad\Planest\L-1.dwg USER: WVerduzco DATE: Jun 26, 2021 5:18pm

HORIZ SCALE: 1"= 20'

0

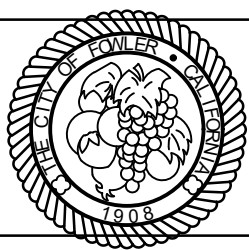
20

40

60

80

PETERS ENGINEERING GROUP
862 POLLASKY AVENUE
CLOVIS, CALIFORNIA 93612
PHONE (559) 299-1544
WWW.PETERS-ENGINEERING.COM



City of
Fowler

128 S. 5TH STREET
FOWLER, CA. 93625

DESIGN	BY	MV
DRAWN	BY	MV
CHECKED	BY	WW

MAIN STREET IMPROVEMENTS
LAYOUT STA 10+00 TO STA 22+00

DISREGARD PRINTS BEARING EARLIER REVISION DATES	REVISION DATES (PRELIMINARY STAGE ONLY)

FIELD CHANGE 1 - 1-26-2021

L-1

LEGEND AND KEYNOTES (APPLIES TO SHEETS L-1 TO L-2)

- #

PAVEMENT DELINEATION DETAIL TO BE INSTALLED PER STATE STD. PLANS
- ME

MATCH EXIST. GRADE
- AC SAWCUT LINE
- MILL & OVERLAY
- PROP. CONCRETE
- STOP

INSTALL "STOP" PAVEMENT MARKING PER STATE STD. PLAN A24D.
- 1

PROTECT SIGN IN PLACE
- 2

PROTECT LIGHT POST IN PLACE
- 3

ADJUST MANHOLE TO GRADE
- 4

ADJUST WATER VALVE TO GRADE
- 5

INSTALL 12" CROSSWALK STRIPING (WHITE, UNLESS NOTED OTHERWISE ON PLANS)

- NOTES:
- ALL EXIST PAVEMENT DELINEATION IN CONFLICT WITH PROPOSED PAVEMENT DELINEATION SHALL BE REMOVED BY WET SANDBLASTING OR OTHER APPROVED METHODS WHICH WILL CAUSE THE LEAST POSSIBLE DAMAGE TO THE PAVEMENT.
 - ALL STRIPING WORK SHALL BE DONE IN ACCORDANCE WITH THE LATEST EDITIONS OF THE STATE OF CALIFORNIA DEPARTMENT OF TRANSPORTATION STANDARD PLANS AND SPECIFICATIONS, THE 2014 CALIFORNIA MANUAL ON UNIFORM TRAFFIC CONTROL DEVICES (2014 CALIFORNIA MUTCD), UNLESS OTHERWISE DIRECTED BY THE CITY ENGINEER.
 - ALL PAVEMENT MARKINGS, CROSSWALKS, LIMIT LINES, SHALL BE THERMOPLASTIC. TRAFFIC STRIPES SHALL BE PAINT (2 COATS) UNLESS OTHERWISE DIRECTED BY THE CITY.
 - THE CONTRACTOR IS RESPONSIBLE TO RECORD AND DOCUMENT AS NECESSARY EXISTING STRIPING, PAVEMENT MARKERS AND MARKINGS, BLUE DOT MARKERS FOR FIRE HYDRANTS IN ORDER TO REPLACE THE STRIPING, PAVEMENT MARKERS AND MARKINGS IN KIND.
 - THE PLANS ARE ACCURATE FOR STRIPING ONLY.
 - PERMANENT STRIPING, PAVEMENT MARKINGS, AND PAVEMENT MARKERS SHALL BE INSTALLED 21-30 DAYS AFTER NEW HMA IS PLACED.

David Peters

REGISTERED CIVIL ENGINEER

11/05/2020

DATE

SHEET NO. 4

TOTAL SHEETS 5

REGISTERED PROFESSIONAL ENGINEER

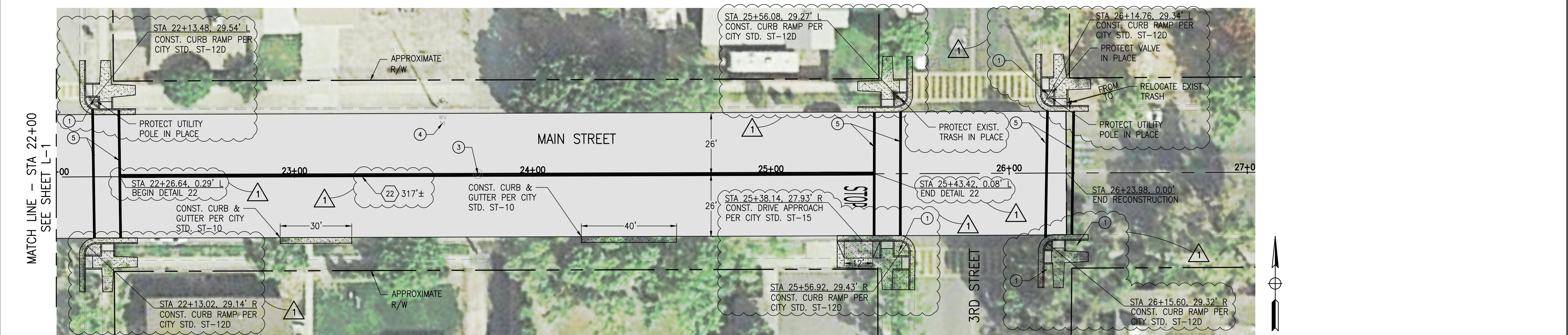
DAVID M. PETERS

No. 52685

EXP. 12/31/20

CIVIL

STATE OF CALIFORNIA



DWG: S:\2020\20-034\Acad\Planest\L-1.dwg USER: WVerduzo DATE: Jun 26, 2021 5:18pm

HORIZ SCALE: 1"= 20'

0

20

40

60

80

PE

PETERS ENGINEERING GROUP

862 POLLASKY AVENUE
CLOVIS, CALIFORNIA 93612

PHONE (559) 299-1544
WWW.PETERS-ENGINEERING.COM

City of
Fowler

128 S. 5TH STREET
FOWLER, CA. 93625

DESIGN BY MV

DRAWN BY MV

CHECKED BY WW

MAIN STREET IMPROVEMENTS

LAYOUT STA 22+00 TO STA 27+00

DISREGARD PRINTS BEARING
EARLIER REVISION DATES

REVISION DATES (PRELIMINARY STAGE ONLY)

1

FIELD CHANGE 1 - 1-26-2021

L-2

ORIGINAL SCALE IN INCHES
FOR REDUCED PLANS

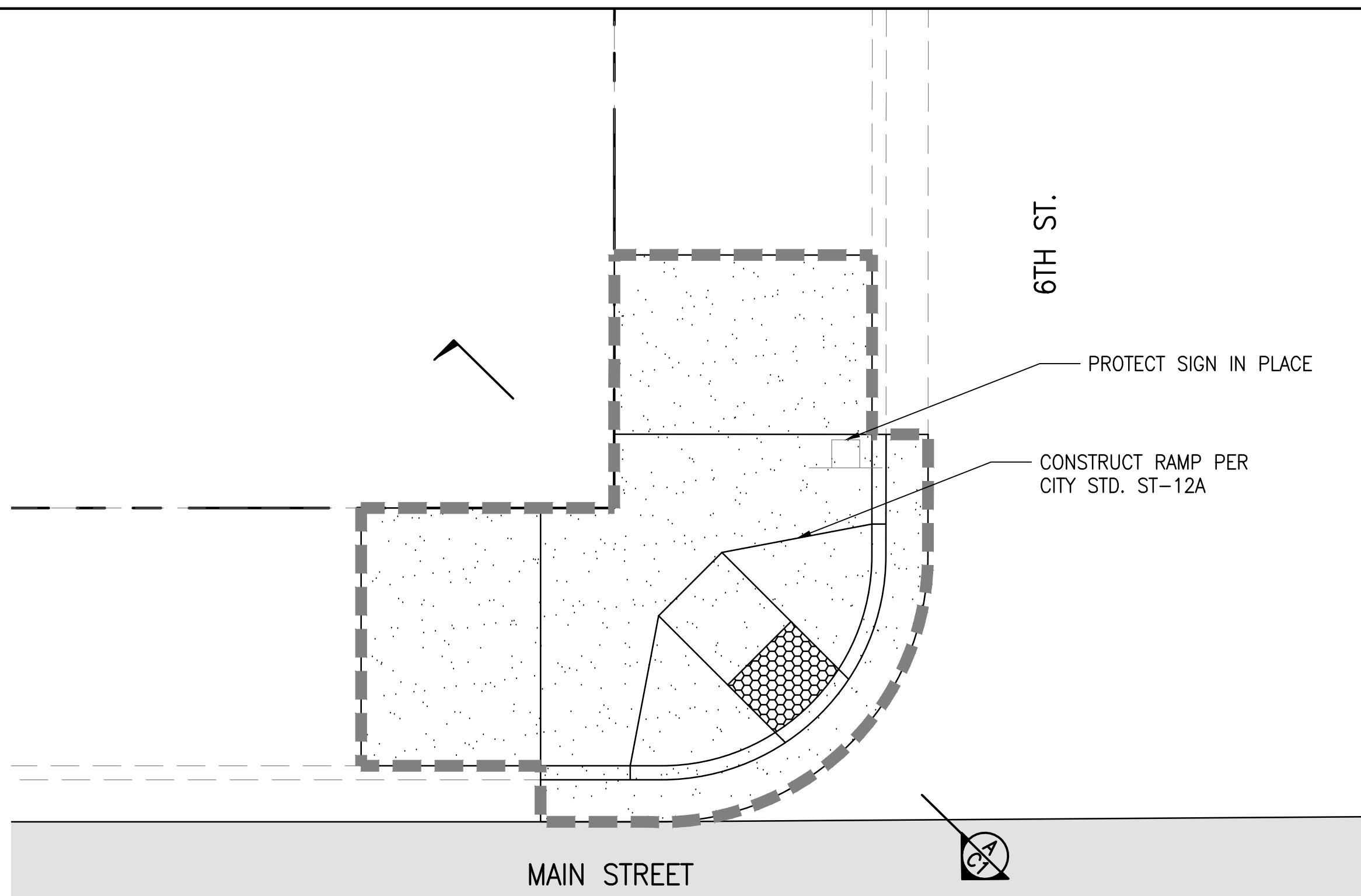
0

1

2

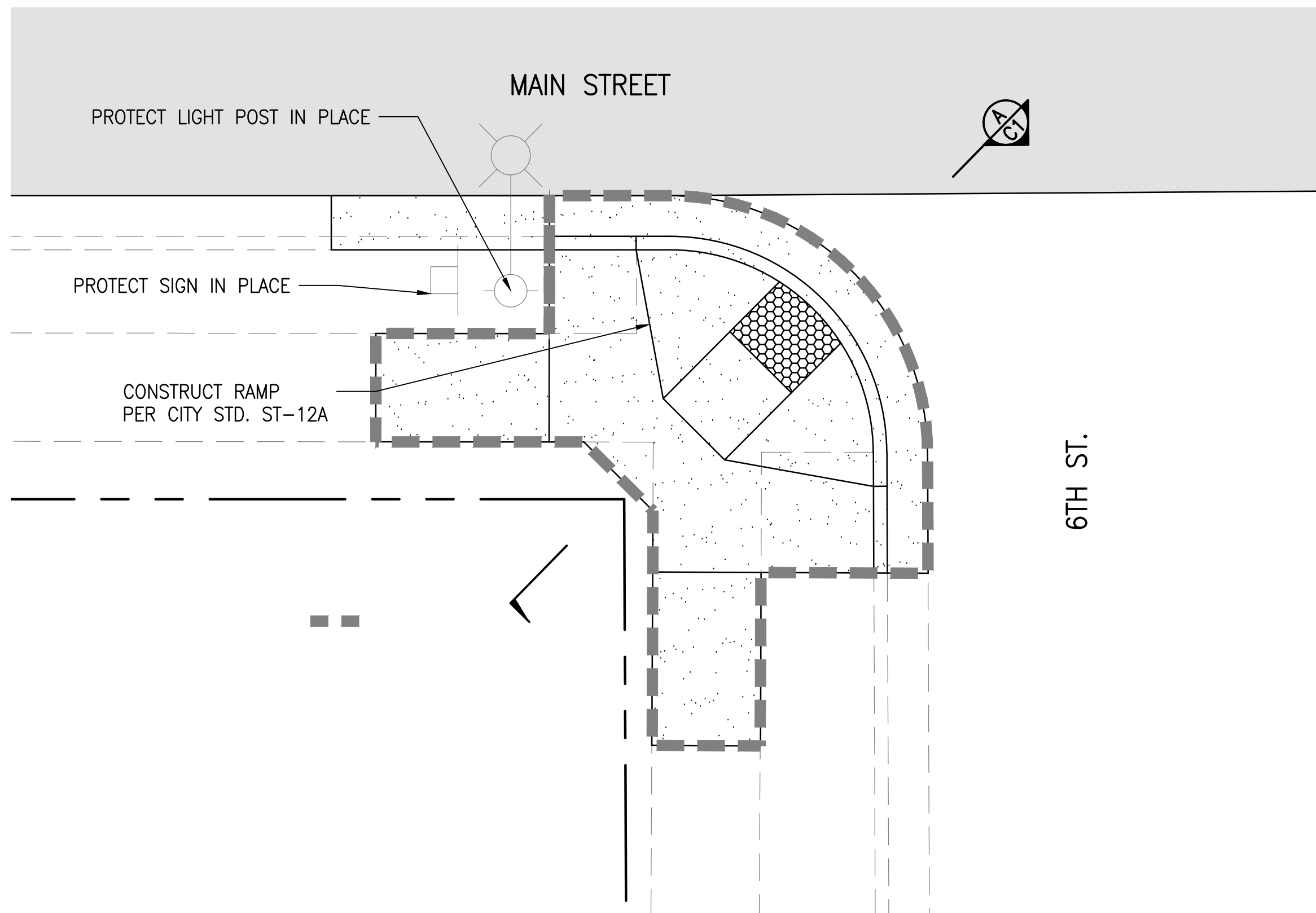
3

DWG: S:\2020\20-04\Acad\Planest\C-1.dwg USER: MVerduzo DATE: Nov 05, 2020 4:21pm



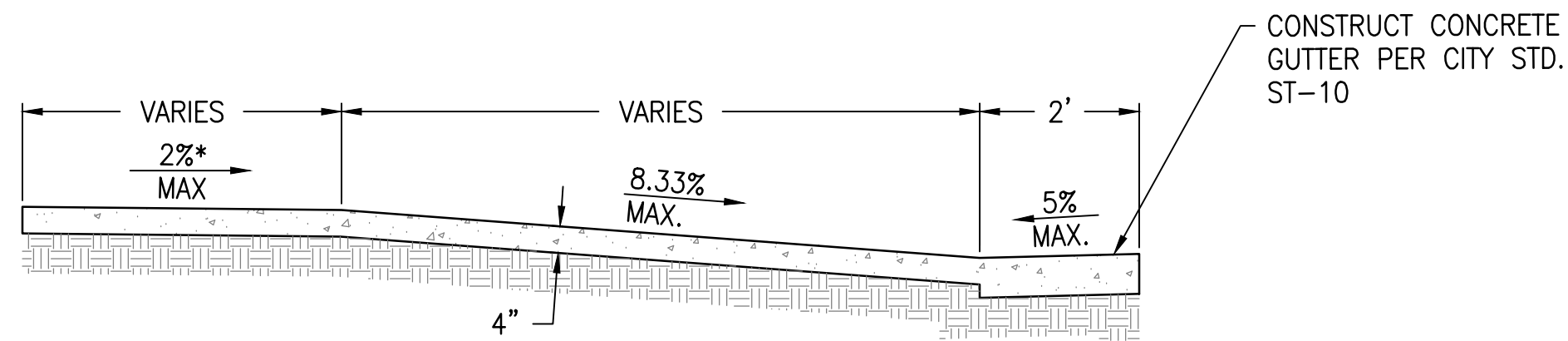
NORTHWEST CORNER CURB RAMP
SCALE: 1" = 5'

1
—



SOUTHWEST CORNER CURB RAMP
SCALE: 1" = 5'

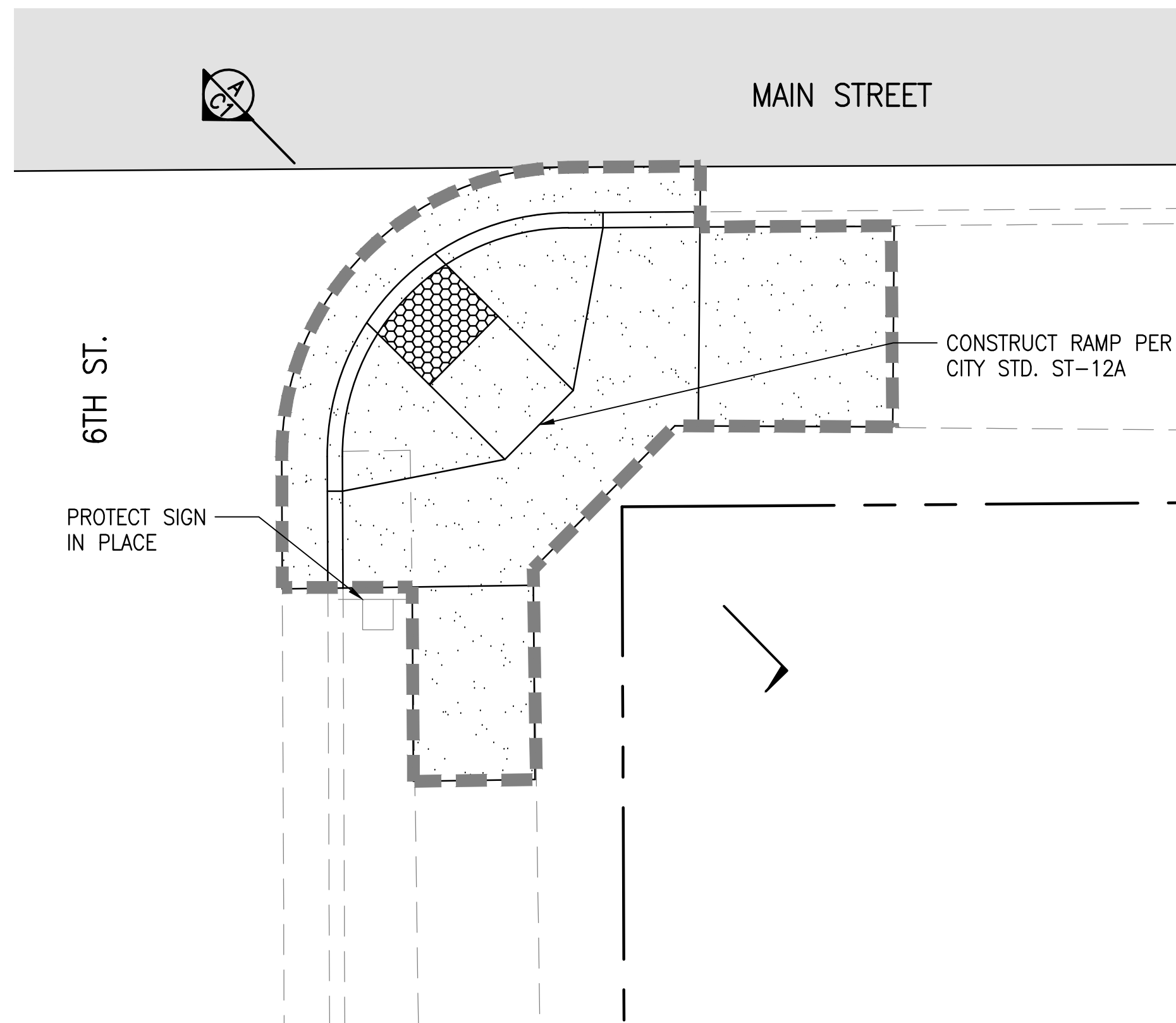
2
—



SECTION - A
NOT TO SCALE

LEGEND (APPLIES TO SHEETS C-1)

- ME MATCH EXISTING GRADE
- AC SAWCUT LINE
- RECONSTRUCT PAVEMENT, SEE TYPICAL SECTIONS
- FURNISH & INSTALL DETECTABLE WARNING SURFACE PER CITY STD. ST-12-A
- RAMP LIMITS

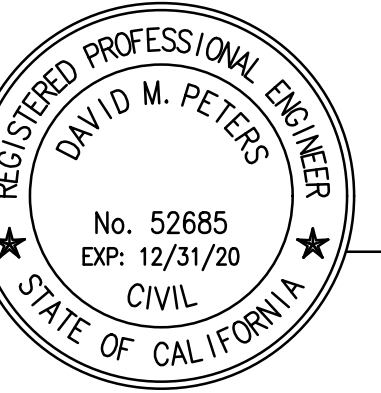


SOUTHEAST CORNER CURB RAMP
SCALE: 1" = 5'

3
—

REGISTERED CIVIL ENGINEER

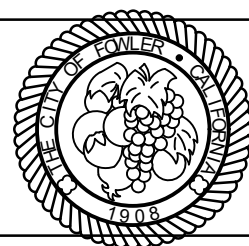
11/05/2020
DATE



SHEET NO. 5
TOTAL SHEETS 5



PETERS ENGINEERING GROUP
862 POLLASKY AVENUE
CLOVIS, CALIFORNIA 93612
PHONE (559) 299-1544
WWW.PETERS-ENGINEERING.COM



City of
Fowler

128 S. 5TH STREET
FOWLER, CA. 93625

DESIGN	BY	MV
DRAWN	BY	MV
CHECKED	BY	WW

MAIN STREET IMPROVEMENTS
CURB RAMP DETAILS

DISREGARD PRINTS BEARING
EARLIER REVISION DATES

REVISION DATES (PRELIMINARY STAGE ONLY)

C-1