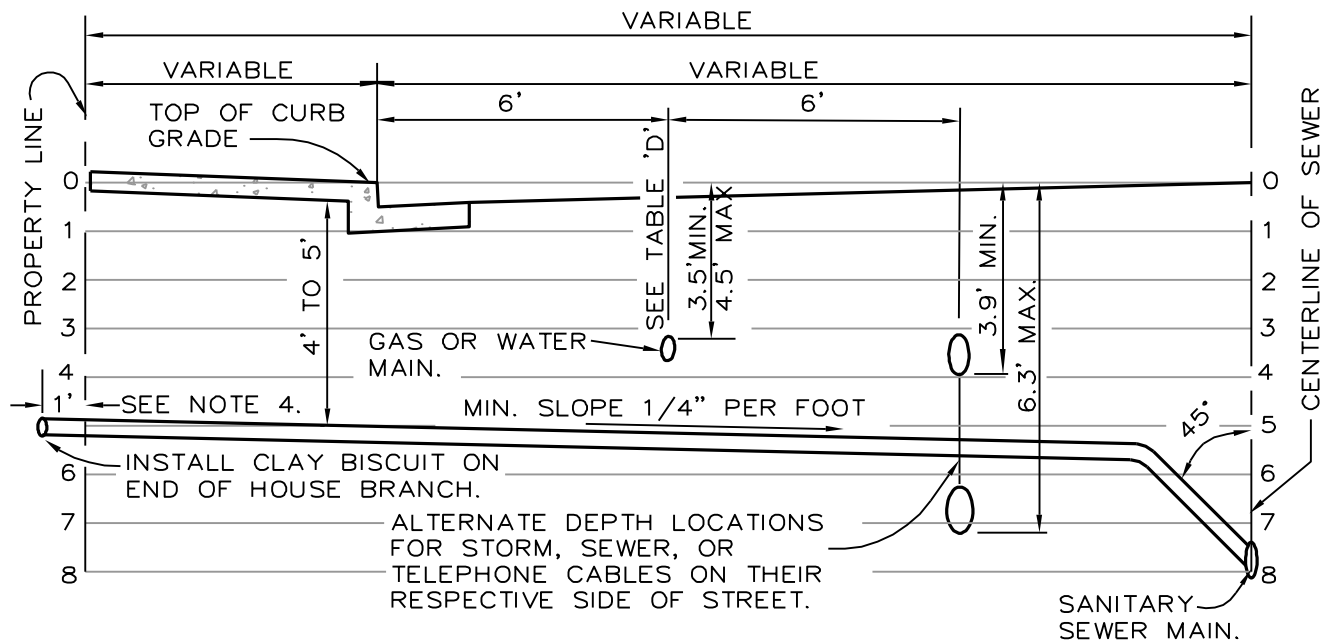
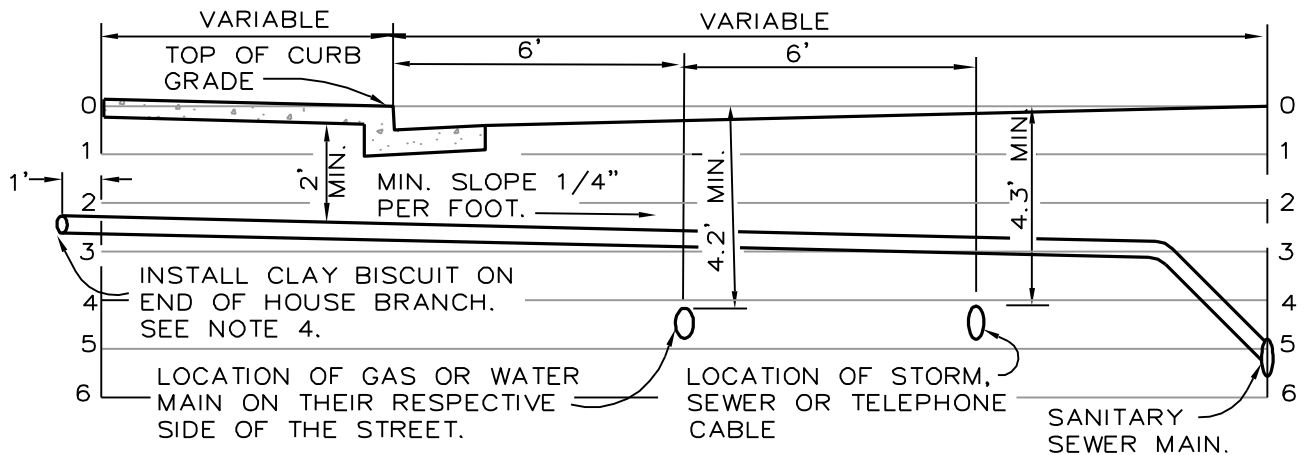


<u>Drawing No.</u>	<u>Drawing Title</u>
M-1	HOUSE BRANCH & UTILITIES LOCATIONS IN STREET
M-2	PARKING LOT LAYOUT (4 Sheets)
M-3	WOOD FENCE DETAIL
M-4	CHAIN LINK FENCE (2 Sheets)
M-5	4" CONCRETE BLOCK FENCE
M-6	6" CONCRETE BLOCK FENCE
M-7	BLOCK FENCE GENERAL NOTES AND SPECIFICATIONS
M-8	GUARD POST
M-9	PROPERTY MONUMENT DETAILS
M-10	BENCH MARK
M-11	TRENCH BACKFILL & SURFACE REPLACEMENT
M-12	COMMERCIAL AND INDUSTRIAL TRASH ENCLOSURE (8 Sheets)
M-13	STREET TREE PLANTING (3 Sheets)
M-14	COMMERCIAL TREE WELL WITH AUTOMATIC IRRIGATION SYSTEM
M-15	60" SQUARE TREE WELL FRAME & GRATE
M-16	PRE-CAST CONCRETE PARK SIGN
M-17	PRE-CAST CONCRETE PARK SIGN FOOTING

REVISION DATE		CITY OF FOWLER	STD.DWG.
12/26/23		MISCELLANEOUS INDEX	M INDEX



DEPTH OF HOUSE BRANCH IF SEWER INSTALLATION PRECEDES INSTALLATION OF WATER AND GAS



DEPTH OF WATER OR GAS MAINS IF INSTALLATION OF WATER OR GAS MAINS PRECEDES THE INSTALLATION OF SEWERS

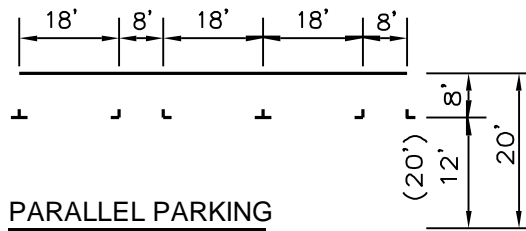
DEPTH SCHEDULE		
DISTANCE	"A"	"D"
6" WATER OR GAS MAIN	4.0'	3.5'
8" WATER OR GAS MAIN	4.3'	3.8'
10" WATER OR GAS MAIN	4.7'	4.2'
12" WATER OR GAS MAIN	5.0'	4.5'

"A" & "D" DIMENSIONS ARE SET TO ALLOW 0.6' CLEARANCE BETWEEN SEWER AND WATER LINES.

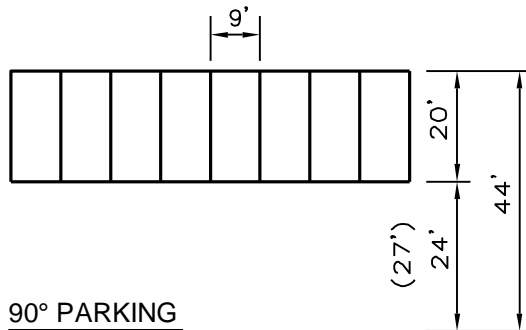
NOTES:

1. EXTEND HOUSE BRANCH 1' BEYOND PROPERTY LINES IN ALL CASES.
2. WATER MAINS AND TELEPHONE DUCTS SHALL OCCUPY ONE SIDE OF THE STREET, GAS MAINS AND STORM MAINS TO OCCUPY THE OTHER SIDE.
3. THE LETTER "S" 3" HIGH SHALL BE INSCRIBED IN THE FACE OF THE CURB AT THE LOCATION OF THE HOUSE BRANCH.
4. WHEN INSTALLING A NEW HOUSE BRANCH LINE, PLACE A 2X4" WOODEN STAKE AT THE END OF THE SERVICE BRANCH. THE STAKE SHOULD EXTEND FROM THE END OF THE BRANCH LINE TO A POINT APPROX. 2' ABOVE THE CURB GRADE.

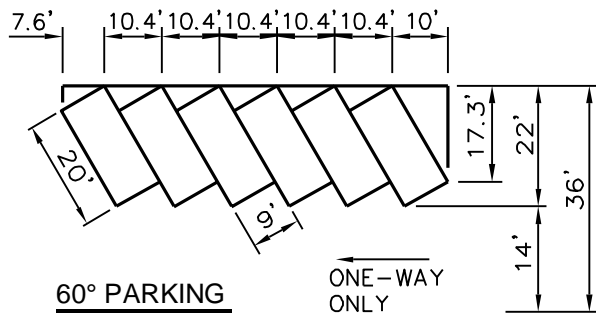
REVISION DATE		CITY OF FOWLER	STD.DWG.
4/10/01		HOUSE BRANCH & UTILITIES LOCATIONS IN STREET	M-1



PARALLEL PARKING

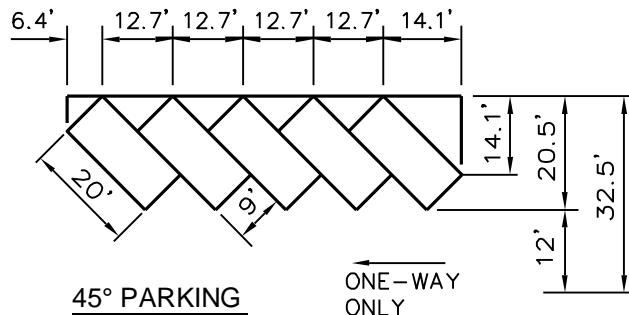


90° PARKING



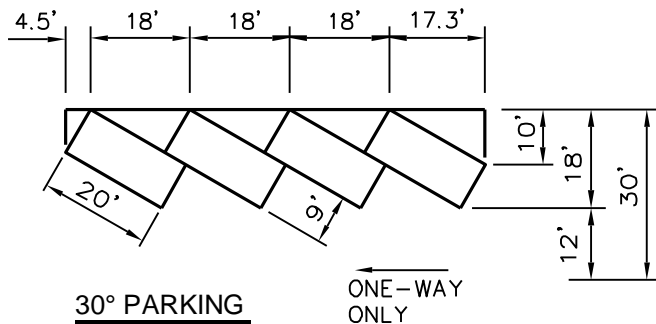
60° PARKING

ONE-WAY ONLY



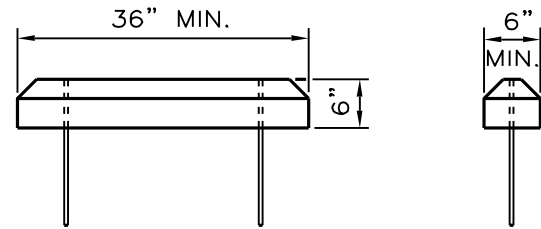
45° PARKING

ONE-WAY ONLY



30° PARKING

ONE-WAY ONLY



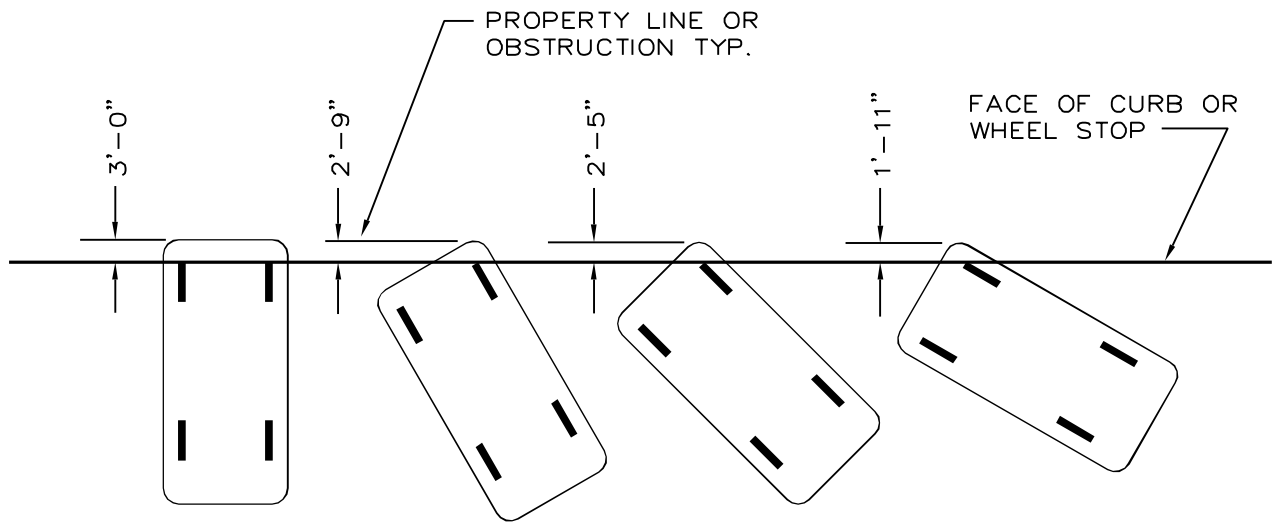
CONCRETE WHEEL STOP

NOTES:

1. DIMENSIONS IN PARENTHESIS INDICATE THE MINIMUM AISLE REQUIRED FOR TWO WAY TRAFFIC.
2. THE PERCENT OF AREA TO BE LANDSCAPED SHALL BE DETERMINED AT THE TIME OF SITE PLAN REVIEW.
3. PROVIDE THE REQUIRED NUMBER OF PARKING STALLS SPECIFIED BY THE CITY PLANNING DEPARTMENT, BASED ON ZONING AND LAND USE.
4. INSTALL WHEEL STOPS TO PREVENT PARKED CARS FROM ENCROACHING OVER SIDEWALKS, ADJOINING PROPERTY OR CITY RIGHT-OF-WAY. REFER TO STD. DWG. M-2, SHEET 2 OF 4 FOR OVERHANG CLEARANCE AND WHEEL STOP REQUIREMENTS.
5. REFER TO CONSTRUCTION PLANS FOR PARKING LOT DRAINAGE AND STRUCTURAL SECTION REQUIREMENTS.
6. PARKING LOTS SHALL HAVE 2% OF THE SPACES DESIGNATED FOR THE PHYSICALLY HANDICAPPED. PARKING LOTS WITH 50 SPACES OR LESS SHALL HAVE A MINIMUM OF ONE HANDICAPPED PARKING SPACE.
7. SEE SHEETS 3 AND 4 FOR HANDICAPPED PARKING STALL AND SIGNAGE REQUIREMENTS.
8. A MAXIMUM OF 30% OF THE REQUIRED PARKING SPACES MAY BE DESIGNED FOR COMPACT AUTOMOBILES. HOWEVER, NOT MORE THAN 30 SPACES WILL BE ALLOWED IN ANY ONE ON-SITE PARKING LOT WITHOUT HAVING FIRST OBTAINED PERMISSION FROM THE CITY ENGINEER. SIZE OF COMPACT AUTOMOBILE STALLS SHALL BE NO LESS THAN 9 FEET IN WIDTH AND 16 FEET IN LENGTH.

NOTE: AISLE WAYS WHICH PROVIDE DIRECT ACCESS TO PARKING STALLS SHALL BE ONE-WAY AISLES, EXCEPT FOR PERPENDICULAR OR PARALLEL PARKING TO THE AISLE WAY.

REVISION DATE		CITY OF FOWLER	STD.DWG.
4/10/01		PARKING LOT LAYOUT	M-2 1 OF 4
03-06			



FRONT OVERHANG CLEARANCE

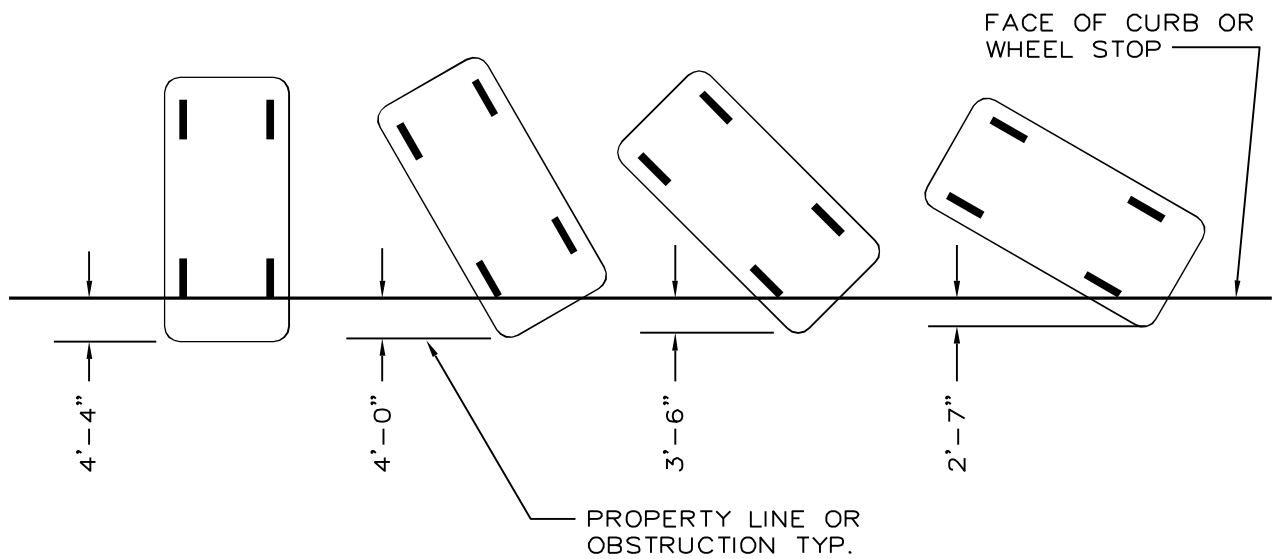
90°

60°

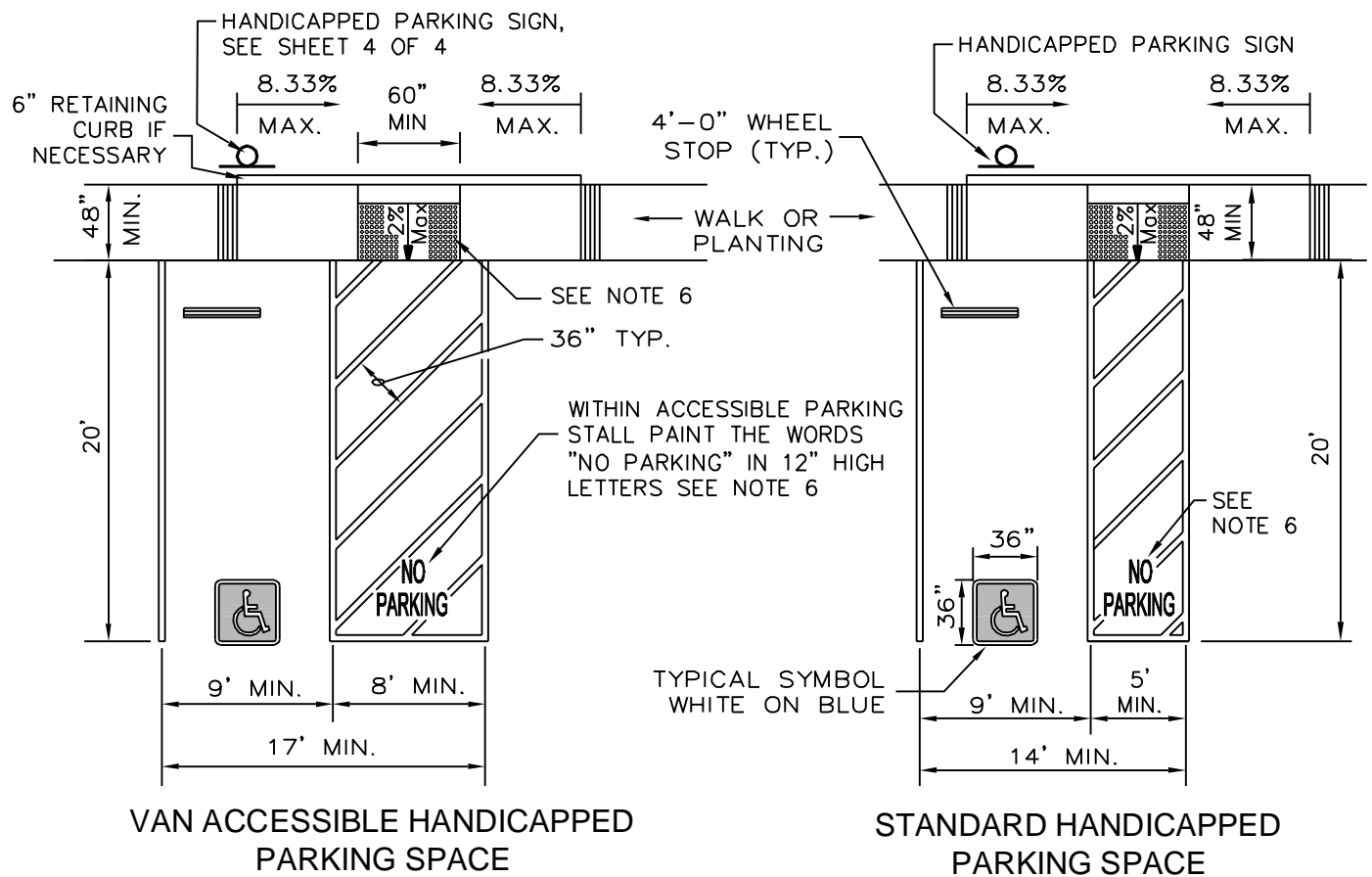
45°

30°

REAR OVERHANG CLEARANCE



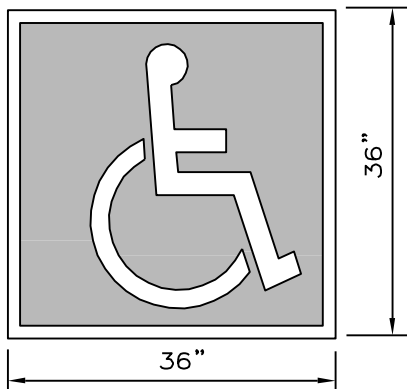
REVISION DATE		CITY OF FOWLER		STD.DWG.
4/10/01		PARKING LOT OVERHANG CLEARANCE		M-2 2 OF 4
3-06				



Notes:

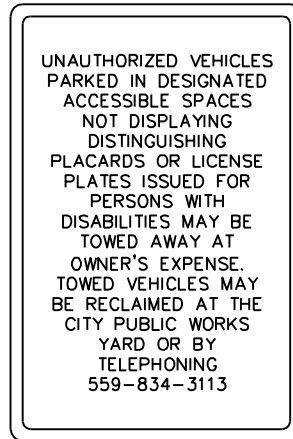
1. FIRST HANDICAPPED PARKING SPACE IN ANY FACILITY SHALL BE VAN ACCESSIBLE, PARKING SPACE DIMENSIONS SHALL BE 20 FOOT LONG BY 9 FOOT MINIMUM WIDE WITH A 8 FOOT MINIMUM ACCESS AISLE ON THE PASSENGER SIDE. SLOPE OF PARKING SPACE AND ACCESS AISLE SHALL NOT EXCEED 2% IN ANY DIRECTION.
2. IN EACH PARKING STALL, A CURB OR BUMPER SHALL BE PROVIDED AND LOCATED TO PREVENT ENCROACHMENT OF VEHICLES OVER THE REQUIRED WIDTH OF WALKWAYS.
3. WHEELCHAIR USER MUST NOT BE FORCED TO GO BEHIND PARKED CARS OTHER THAN THEIR OWN.
4. EACH PARKING SPACE RESERVED FOR PERSONS WITH DISABILITIES SHALL BE IDENTIFIED BY A REFLECTORIZED SIGN PERMANENTLY POSTED IMMEDIATELY ADJACENT AND VISIBLE FROM EACH STALL OR SPACE, CONSISTING OF A PROFILE VIEW OF A WHEELCHAIR WITH OCCUPANT IN WHITE ON DARK BLUE BACKGROUND, SEE M-2, SHEET 4 OF 4.
5. THE WORDS "NO PARKING", SHALL BE PAINTED IN WHITE LETTERS NO LESS THAN 12" HIGH AND LOCATED SO THAT IT IS VISIBLE TO TRAFFIC ENFORCEMENT OFFICIALS. MARKINGS SHALL CONFORM TO CALTRANS REVISED NEW STANDARD PLAN RNSP A90B.
6. CURB RAMPS SHALL HAVE A DETECTABLE WARNING SURFACE THAT EXTENDS THE FULL WIDTH AND 3.0' DEPTH OF THE RAMP. DETECTABLE WARNING SURFACES SHALL CONFORM TO CALTRANS STD. RSP A88A, CASE "C" AND THE REQUIREMENTS IN THE SPECIAL PROVISIONS.

REVISION DATE		CITY OF FOWLER	STD.DWG.
03-06		HANDICAPPED PARKING	M-2 3 OF 4
6/19/07			



**PAINTED PARKING
SURFACE EMBLEM**

1/2" RADIUS TYP. →
BLUE →
WHITE →
REFLECTORIZED
SIGN TO BE
CONSTRUCTED OF
PORCELAIN STEEL
WITH BEADED
TEXT, OR EQUAL.
70 SQ. INCH MIN.



SEE NOTE NO. 7
WARNING SIGN

80" MIN. FOR
FREE STANDING
36" MIN. FOR
WALL MOUNTED
TO TOP OF WALKING
SURFACE

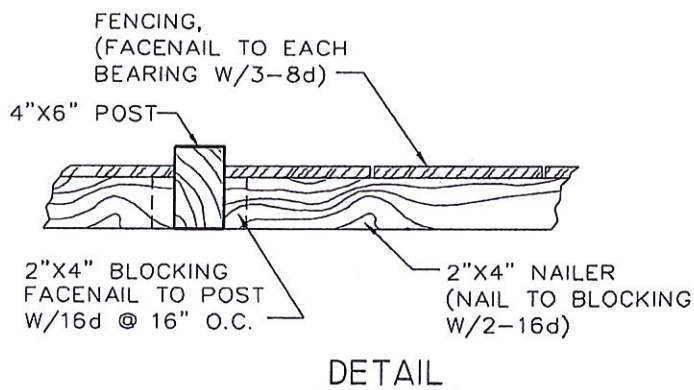
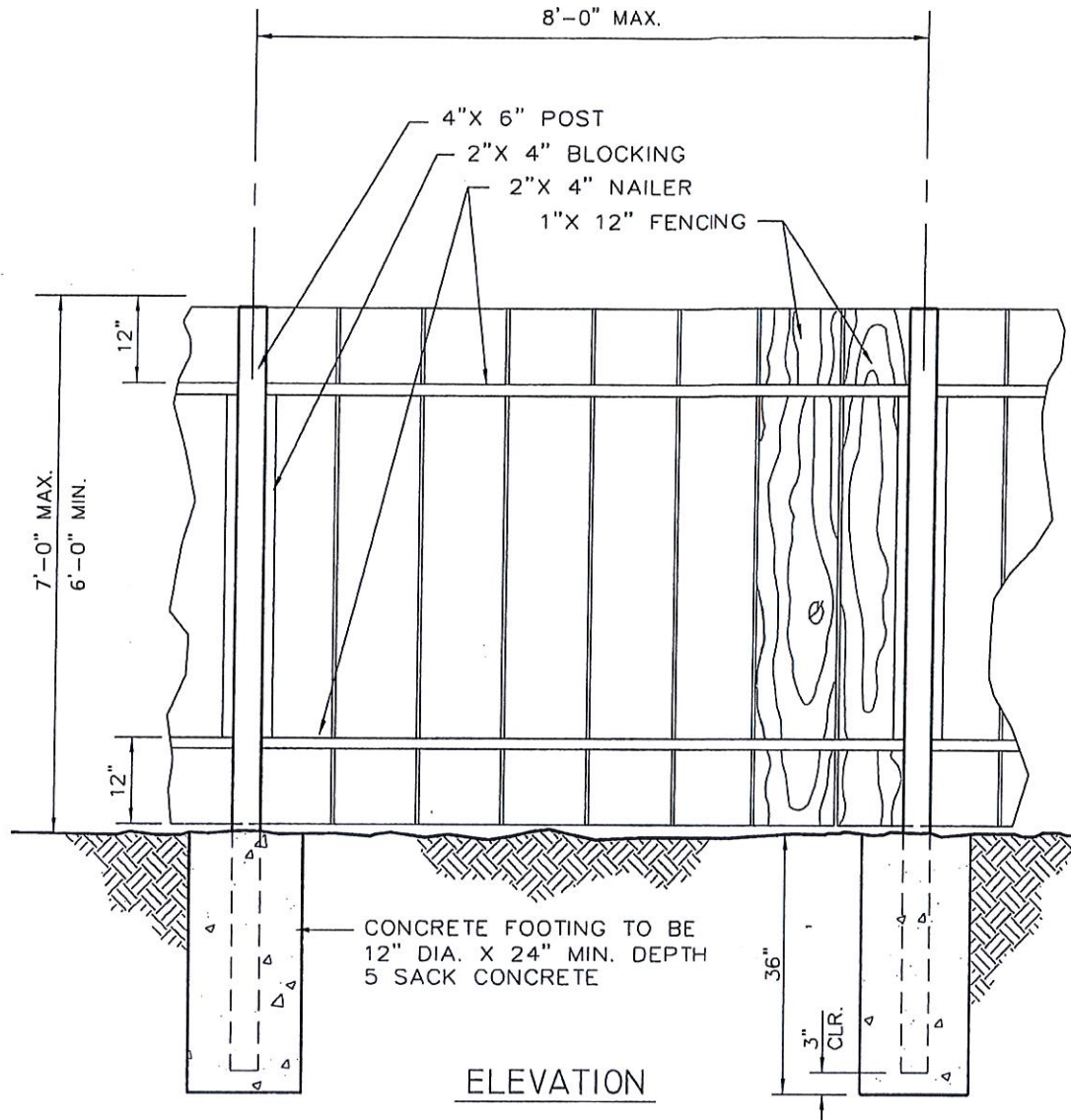
**WALL OR FREE
STANDING SIGN**

NOTES:

1. SIGNAGE IS TO BE INSTALLED AT EACH SPACE.
2. AREA OF THE SIGN(S) IS NOT SMALLER THAN 70 SQUARE INCHES.
3. WHEN POSTED IN A PATH OF TRAVEL, THE BOTTOM OF THE SIGN IS TO BE 80" MINIMUM FROM THE PARKING SPACE FINISHED GRADE.
4. WHEN WALL MOUNTED, SIGN IS CENTERED ON THE WALL AT THE INTERIOR END OF THE PARKING SPACE AT A MINIMUM HEIGHT OF 36" FROM THE PARKING SPACE FINISHED GRADE, GROUND OR SIDEWALK.
5. VAN ACCESSIBLE PARKING SPACES HAVE ADDITIONAL SIGN MOUNTED BELOW SYMBOL OF ACCESSIBILITY THAT STATES "VAN ACCESSIBLE".
6. EACH PARKING SPACE RESERVED FOR PERSONS WITH DISABILITIES SHALL BE IDENTIFIED BY OUTLINING A PROFILE VIEW OF A WHEELCHAIR WITH OCCUPANT IN WHITE ON BLUE BACKGROUND. THE PROFILE VIEW SHALL BE LOCATED SO THAT IT IS VISIBLE TO A TRAFFIC ENFORCEMENT OFFICER WHEN A VEHICLE IS PROPERLY PARKED IN THE SPACE AND SHALL BE 36" HIGH BY 36" WIDE.
7. AN ADDITIONAL SIGN SHALL ALSO BE POSTED IN A CONSPICUOUS PLACE AT EACH ENTRANCE TO OFF-STREET PARKING FACILITIES, OR IMMEDIATELY ADJACENT TO AND VISIBLE FROM EACH STALL OR SPACE. THE SIGN SHALL NOT BE LESS THAN 17 INCHES BY 22 INCHES (432mm BY 559mm) IN SIZE WITH LETTERING NOT LESS THAN 1 INCH (25mm) IN HEIGHT, WHICH CLEARLY AND CONSPICUOUSLY STATES THE FOLLOWING:

"UNAUTHORIZED VEHICLES PARKED IN DESIGNATED ACCESSIBLE SPACES NOT DISPLAYING DISTINGUISHING PLACARDS OR LICENSES PLATES ISSUED FOR PERSONS WITH DISABILITIES MAY BE TOWED AWAY AT OWNER'S EXPENSE. TOWED VEHICLES MAY BE RECLAIMED AT THE CITY PUBLIC WORKS YARD OR BY TELEPHONING 559-834-3113."

REVISION DATE		CITY OF FOWLER	STD.DWG.
3-06		HANDICAPPED PARKING SPACE SIGNAGE	M-2 4 OF 4
6/19/07			
1/06/09			



NOTES:

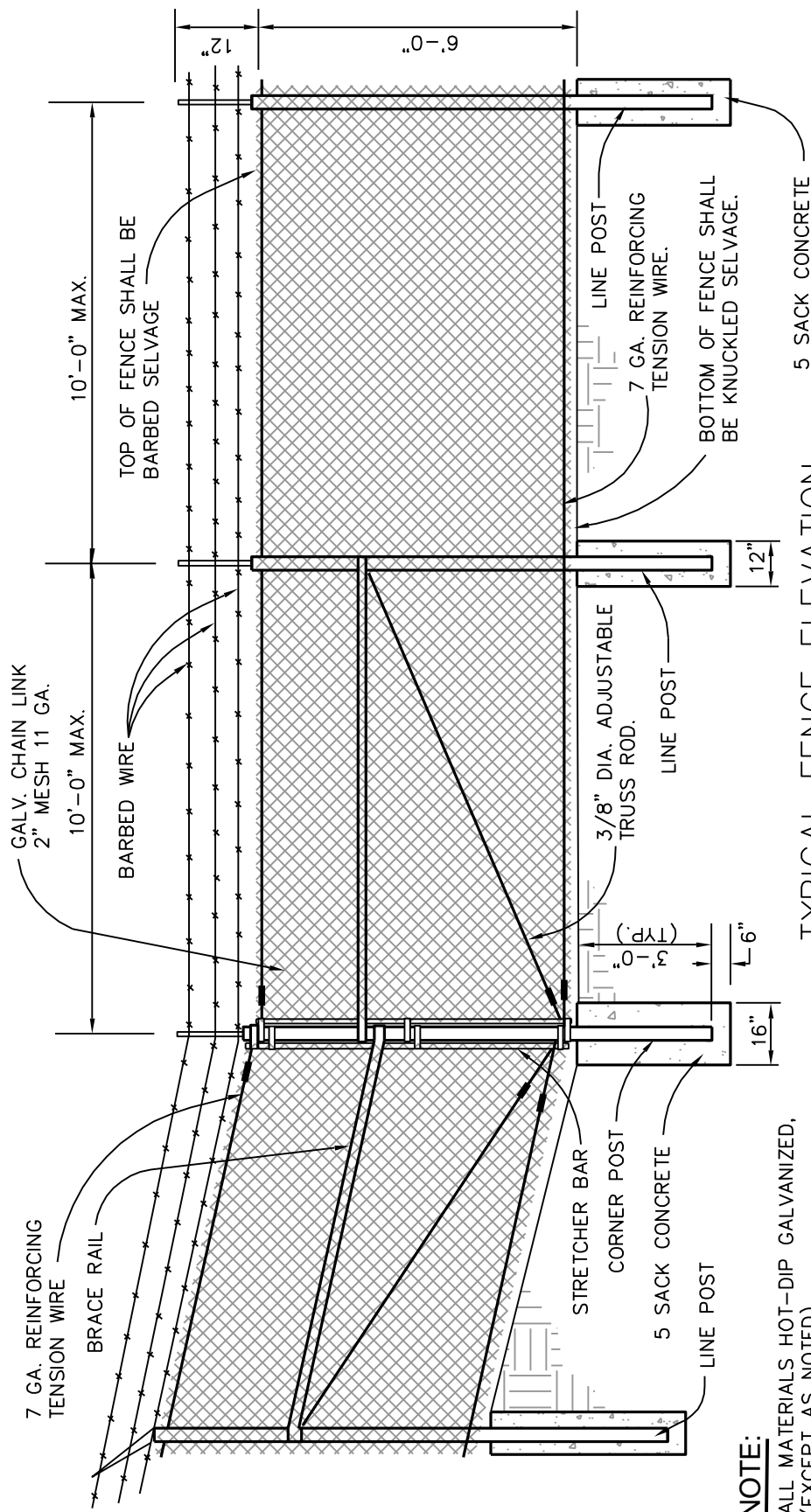
1. 1 x 12 FENCING SHALL BE CEDAR. POSTS, BLOCKING AND NAILERS SHALL BE PRESSURE TREATED DOUGLAS FIR CONFORMING TO U.B.C. STD. 25-12.
2. ALL NAILS USED ARE TO BE GALVANIZED. NUMBER AND SIZE AS NOTED.

REVISION DATE		CITY OF FOWLER		STD.DWG.
4/10/01		WOOD FENCE DETAIL		M-3
11-18-14				

REVISION DATE	
4/10/01	

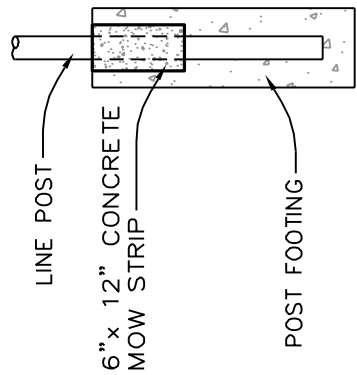
CITY OF FOWLER	
CHAIN LINK FENCE	

Std. Dwg.
M-4
1 OF 2



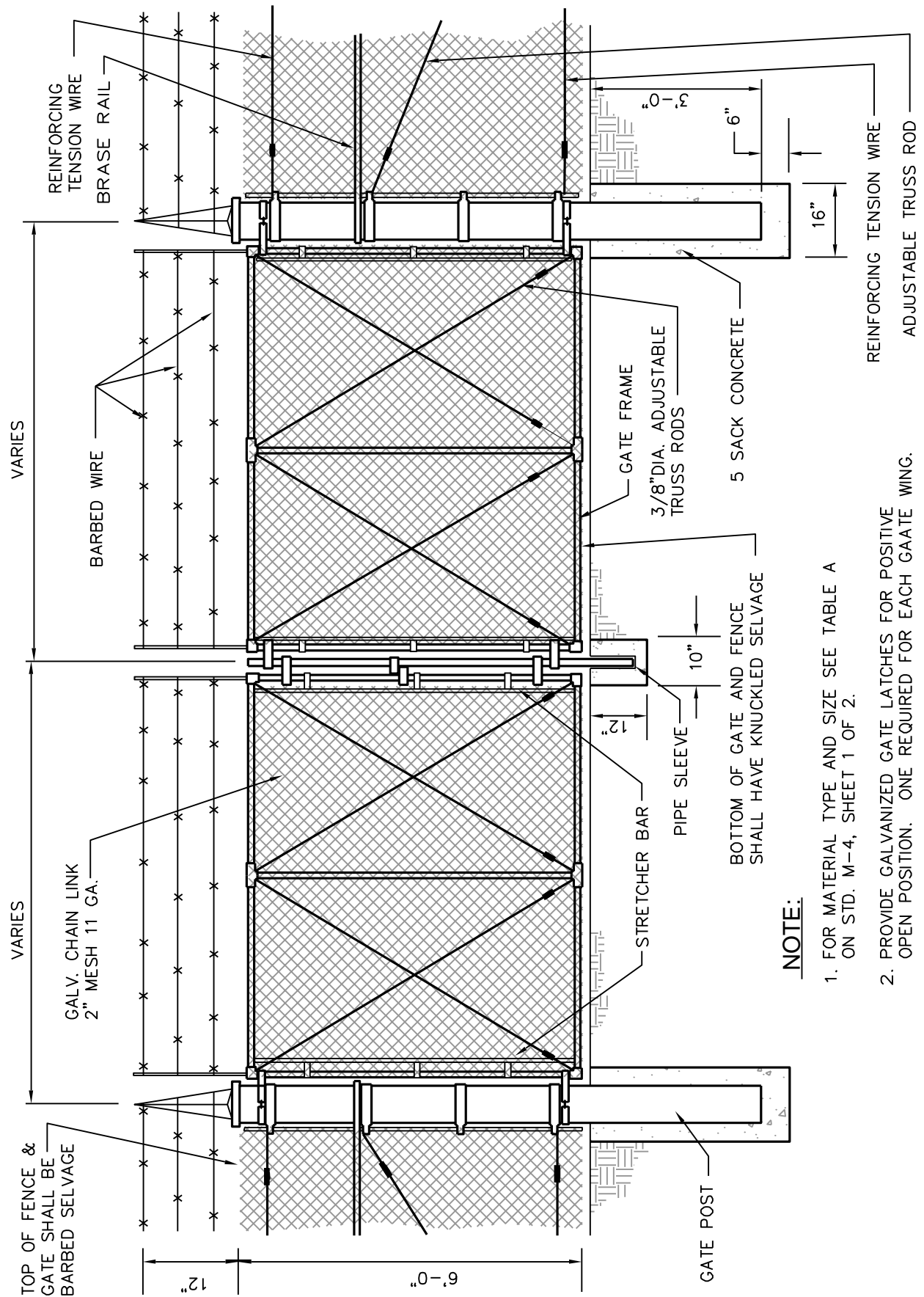
NOTE:
ALL MATERIALS HOT-DIP GALVANIZED, (EXCEPT AS NOTED).
WHEN DIRECTED BY THE CITY ENGINEER THE CHAIN LINK FABRIC SHALL HAVE FACTORY INSTALLED POLYETHYLENE OR WOOD SLATS.

TYPICAL FENCE ELEVATION



MOW STRIP DETAIL

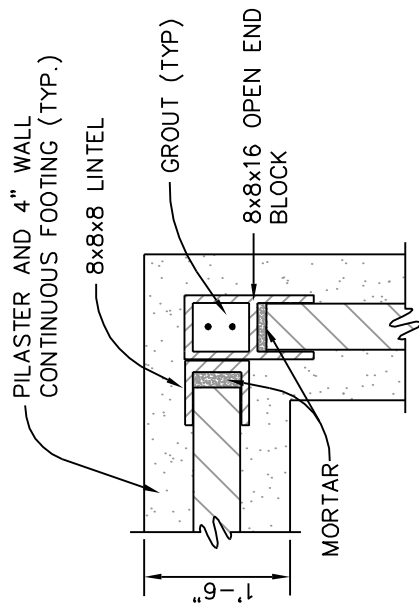
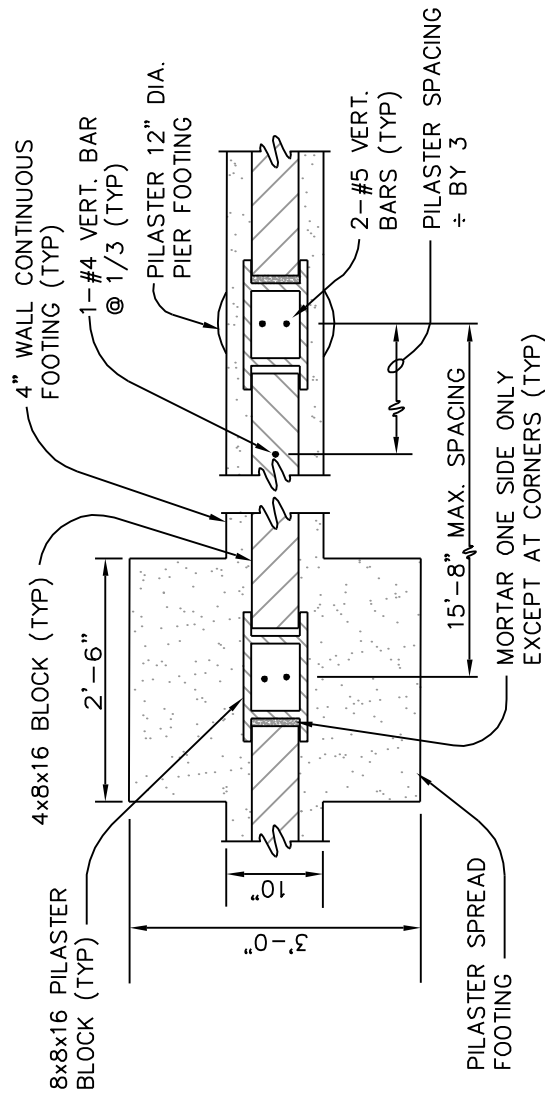
TABLE A			
DESCRIPTION	SIZE	DESCRIPTION	SIZE
END POSTS	2-7/8" O.D. SCH.40	STRETCHER BAR BANDS	1/8" X 1"
CORNER POSTS	2-7/8" O.D. SCH.40	STRETCHER BARS	1/4" X 3/4"
LINE POSTS	2-3/8" O.D. SCH.40	TRUSS RODS	3/8" DIA. ADJUSTABLE
TENSION WIRE	7 GA. REINFORCING	TENSION WIRE TIES	11 GA. @ 24" O.C.
BRACE RAIL	1-5/8" O.D. SCH.40	LINE POSTS TIES	6 GA. @ 14" O.C.
GALVANIZED AFTER WEAVING CHAIN LINK FABRIC	2" x 11GA. x 6'	BARBED WIRE	12 1/2 GA. 4 PT.
		GATE POSTS	4-1/2" O.D. SCH.40



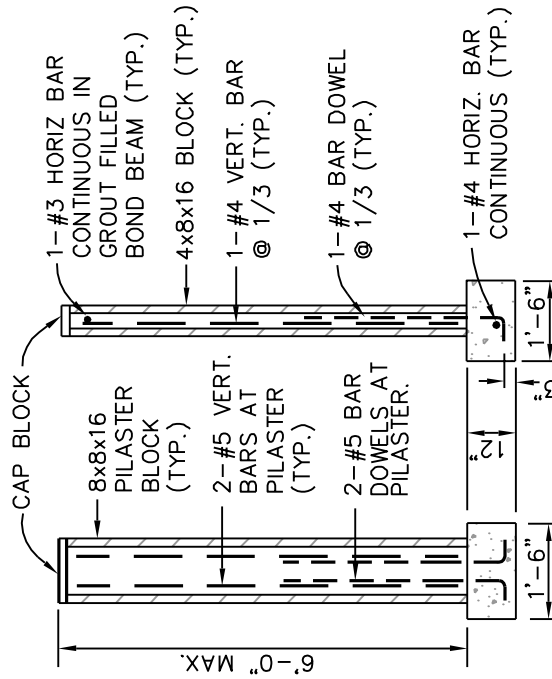
NOTE:

1. FOR MATERIAL TYPE AND SIZE SEE TABLE A ON STD. M-4, SHEET 1 OF 2.
2. PROVIDE GALVANIZED GATE LATCHES FOR POSITIVE OPEN POSITION. ONE REQUIRED FOR EACH GATE WING.
3. SEE SPECIFICATIONS FOR OPTIONS WITH BARBED WIRE.

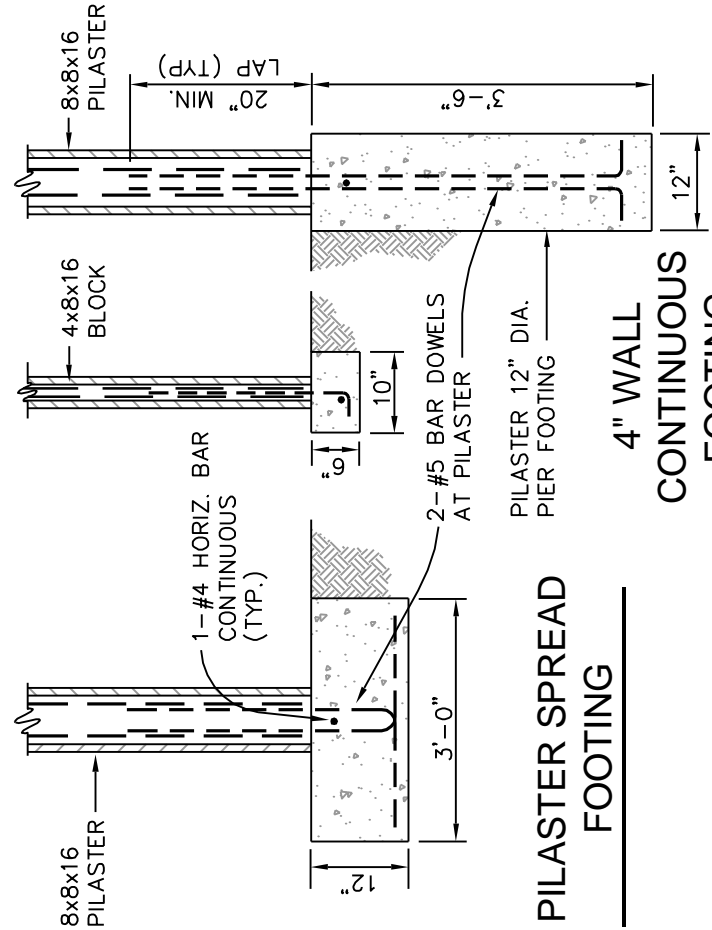
REVISION DATE		CITY OF FOWLER		Std. Dwg.
4/10/01		CHAIN LINK GATE		M-4
				2 OF 2



CORNER CONSTRUCTION



PILASTER AND 4" WALL CONTINUOUS FOOTING



NOTES:
FOR GENERAL NOTES AND SPECIFICATION
SEE STANDARD DRAWING M-7.

REVISION DATE

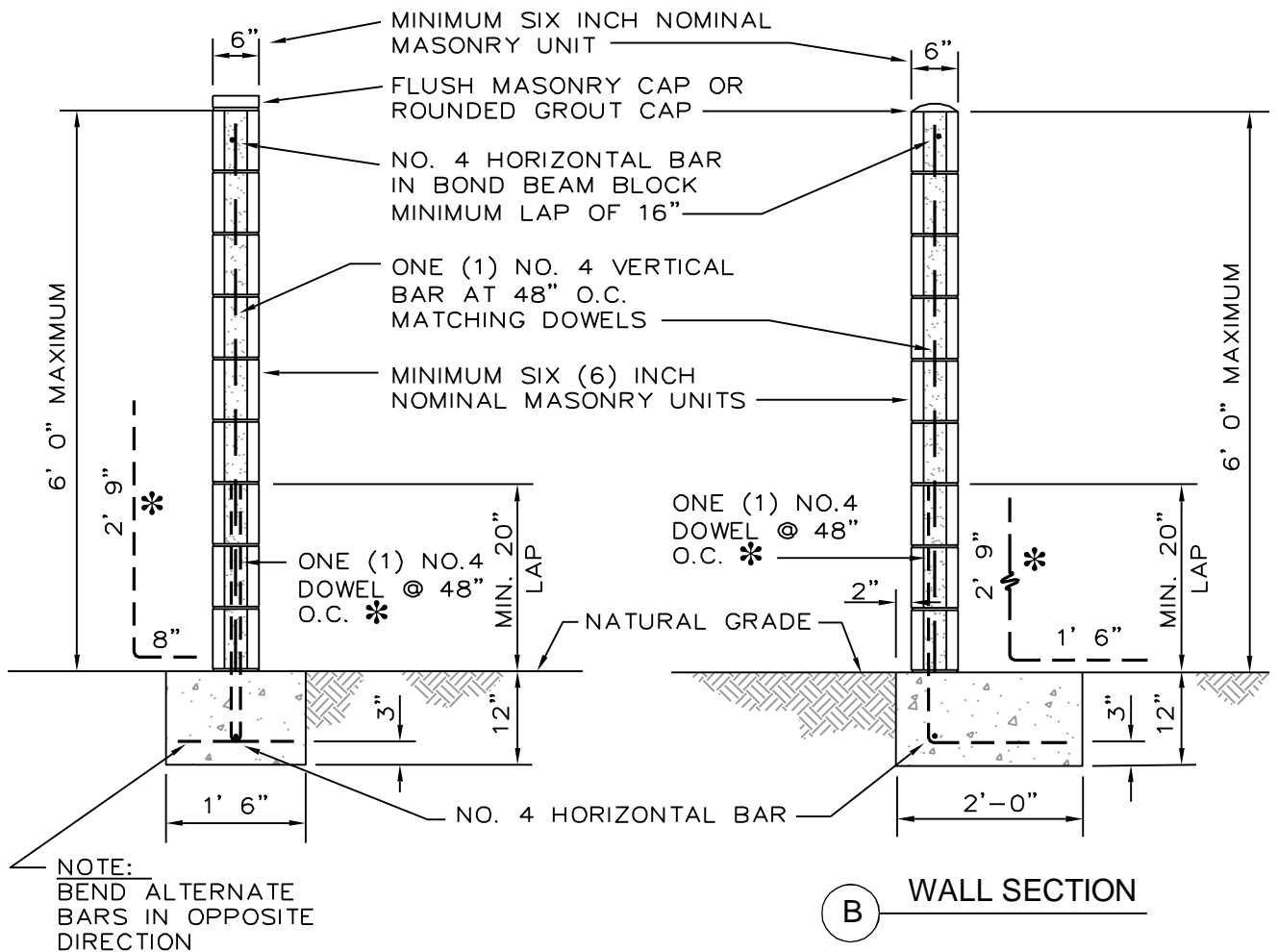
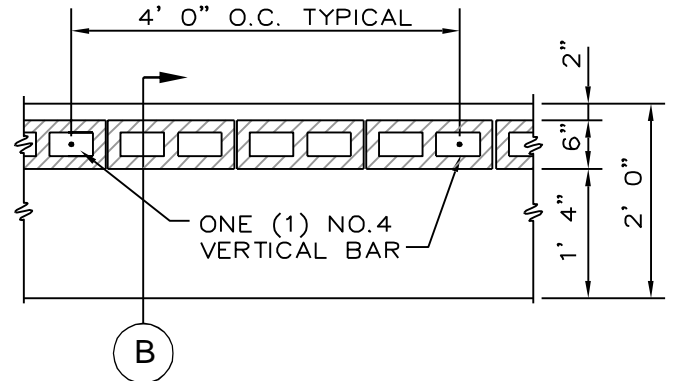
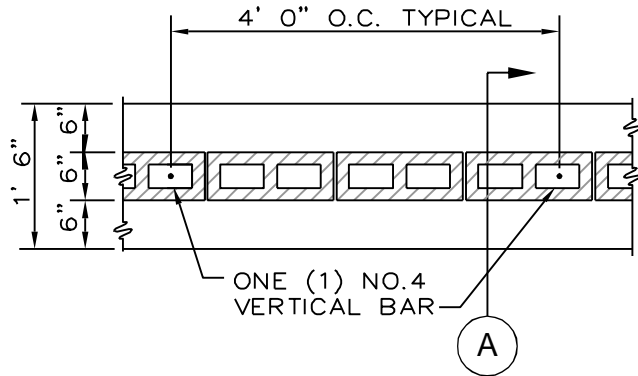
4/10/01

CITY OF FOWLER

STD.DWG.

4" CONCRETE BLOCK FENCE

M-5



NOTES:

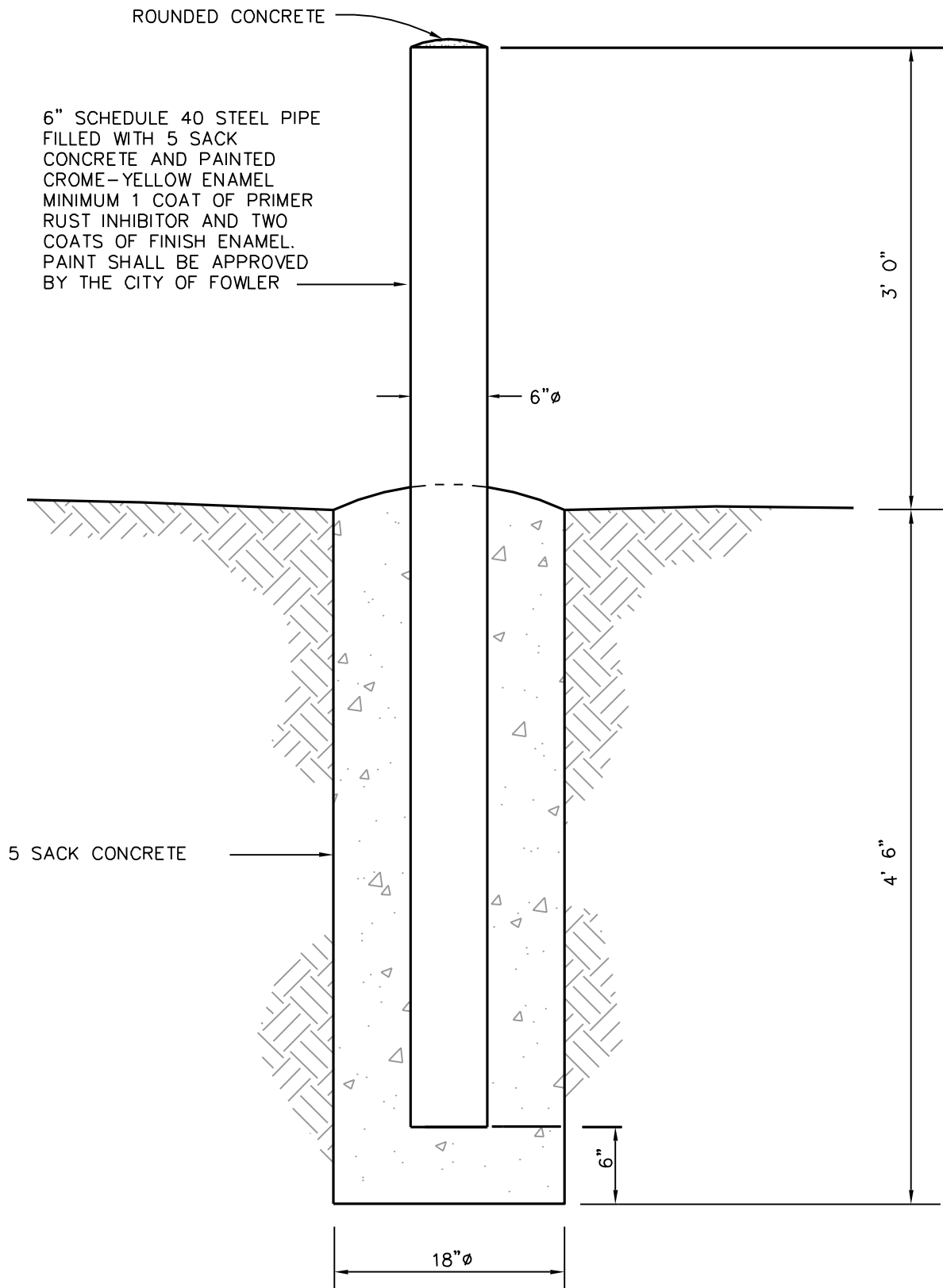
1. FOR GENERAL NOTES AND SPECIFICATIONS SEE STANDARD M-7.
2. BLOCK RETAINING WALLS SHALL BE ENGINEERED AND CERTIFIED.

REVISION DATE		CITY OF FOWLER	STD.DWG.
4/10/01			
		6" CONCRETE BLOCK FENCE	M-6

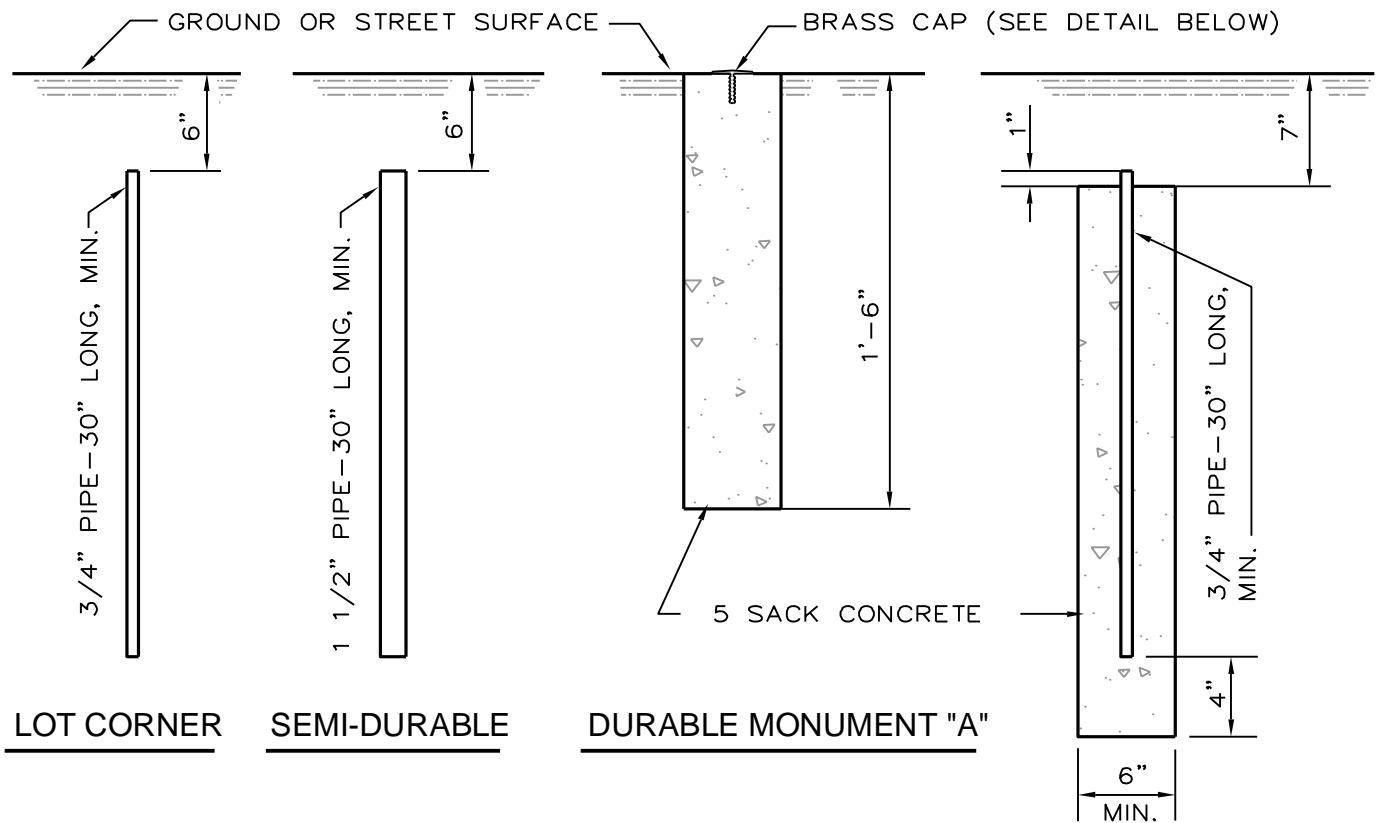
GENERAL NOTES AND SPECIFICATIONS:

1. ALL CONSTRUCTION SHALL COMPLY WITH THE UNIFORM BUILDING CODES.
2. GROUT ALL CELLS CONTAINING REINFORCING STEEL.
3. ALL MASONRY UNITS SHALL COMPLY WITH THE LATEST ADOPTED UNIFORM BUILDING CODE, U.B.C. STD. 24-4 AND ASTM C-90, GRADE N.
4. ALL MASONRY WALLS SHALL BE INSPECTED BY THE CITY ENGINEER.
5. DEPTHS OF FOOTINGS ARE INTO NATURAL UNDISTURBED SOIL OR TESTED AND APPROVED COMPACTED FILL.
6. REINFORCING STEEL SHALL BE DEFORMED BARS MINIMUM GRADE 40.
7. FOOTING CONCRETE SHALL BE MINIMUM 2500 PSI @ 28 DAYS.
8. THIS DESIGN SHALL NOT BE USED FOR RETAINING EARTH.
9. MORTAR SHALL BE TYPE-S (MIN. 1800 PSI @ 28 DAYS) 1 PART TYPE 1 CEMENT; ONE-HALF (1/2) PART LIME PUTTY OR HYDRATED LIME; FOUR AND ONE-HALF (4 1/2) PARTS SAND (MAXIMUM).
- ¹⁰GROUT SHALL BE A MINIMUM 2000 PSI AT 28 DAYS, ONE PART CEMENT; THREE PARTS SAND; TWO PARTS PEA GRAVEL.
- ¹¹EARTH COLORED MATERIALS SHALL BE USED WHERE RESIDENTIAL AREAS ARE AFFECTED.

REVISION DATE		CITY OF FOWLER	STD.DWG.
4/10/01		BLOCK FENCE GENERAL NOTES AND SPECIFICATIONS	M-7

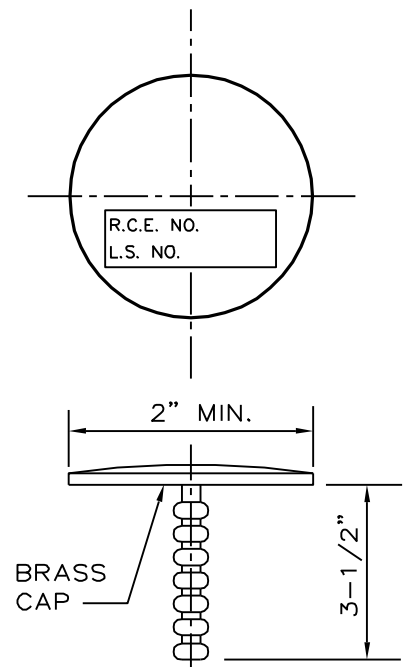


REVISION DATE		CITY OF FOWLER	STD.DWG.
4/10/01			
		GUARD POST	M-8



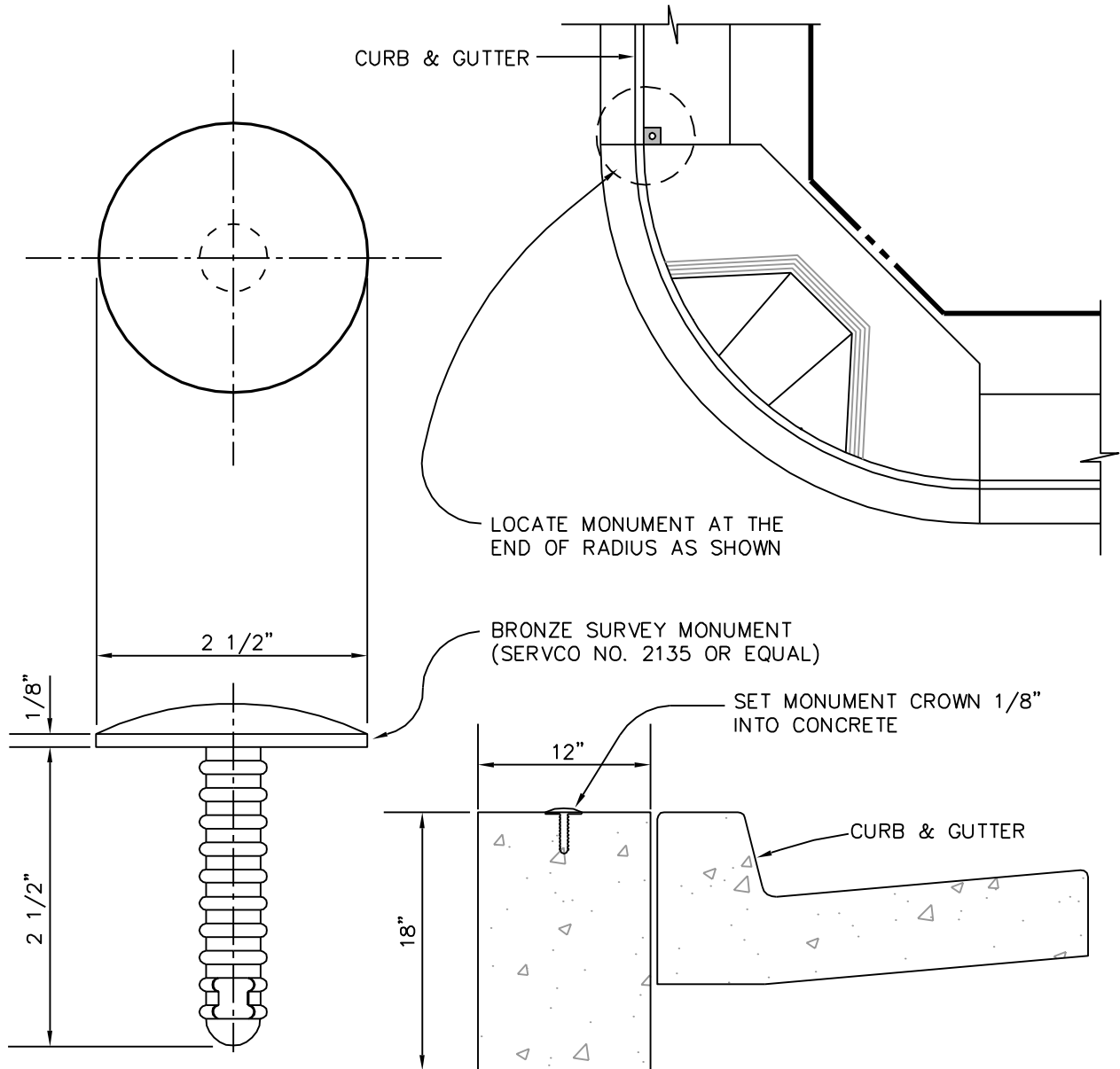
NOTES:

1. STATE LAW REQUIRES ALL CORNERS TO BE TAGGED WITH LAND SURVEYOR'S OR REGISTERED CIVIL ENGINEER'S NUMBER.
2. REGULAR-SHAPED SUBDIVISIONS SHALL HAVE BLOCK CORNERS MARKED WITH SEMI-DURABLE MONUMENTS OR DURABLE MONUMENT "B".
3. ALL INTERSECTIONS, ANGLE AND CURVE POINTS OF STREET CENTER-LINES SHALL BE MARKED WITH DURABLE MONUMENTS "A", AFTER STREET SURFACING IS IN PLACE.



DETAIL - BRASS CAP

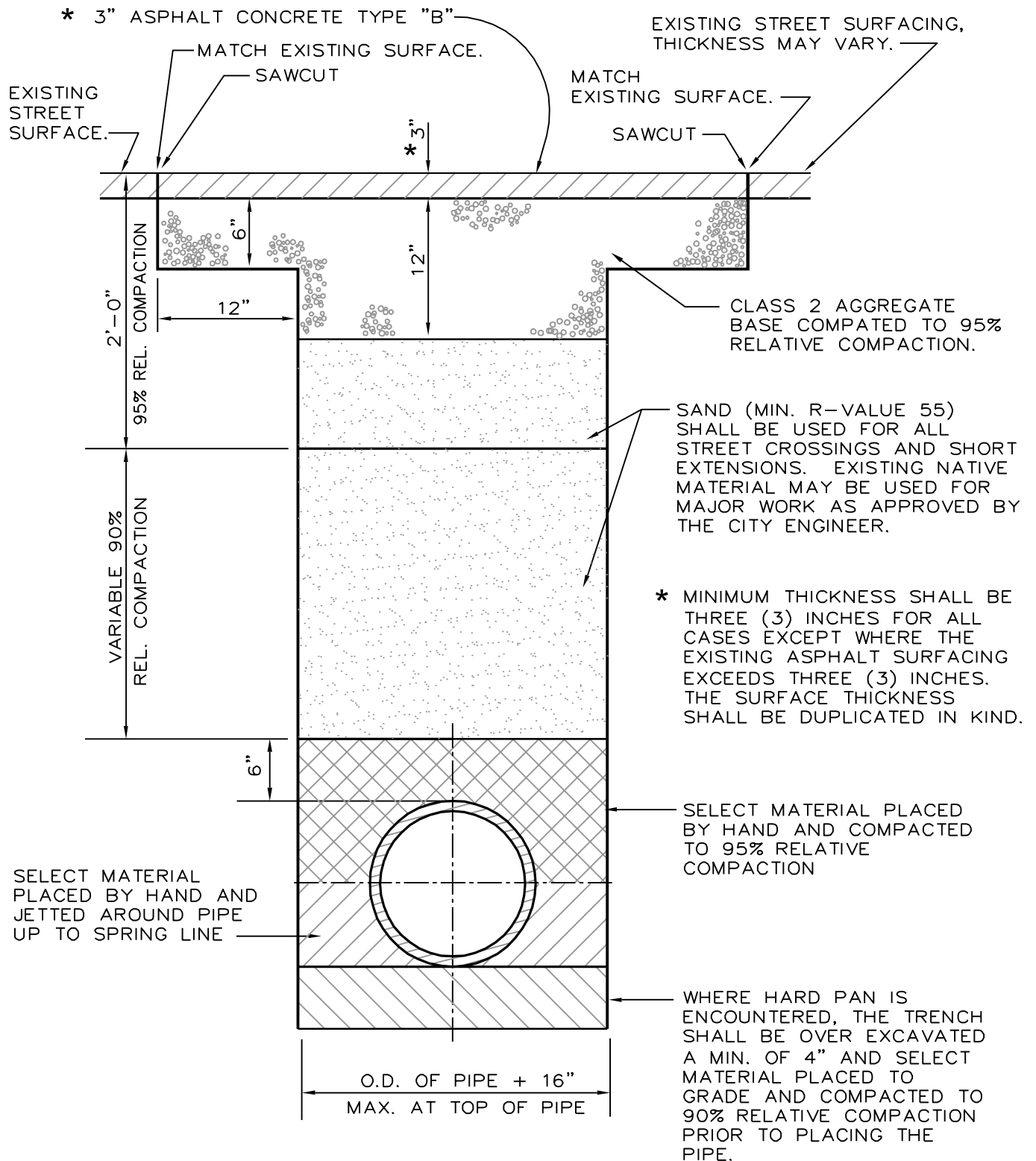
REVISION DATE		CITY OF FOWLER	STD.DWG.
4/10/01		PROPERTY MONUMENT DETAILS	M-9



NOTES:

1. LOCATE BENCH MARKS AT THE NORTHEAST CORNER OF INTERSECTIONS APPROVED BY THE CITY ENGINEER.
2. COMPLETE NOTES SHOWING LOCATIONS, ELEVATIONS, AND CLOSURES SHALL BE FILED WITH THE CITY ENGINEER.
3. ELEVATION SHALL BE BASED ON U.S.G.S DATUM.
4. BENCH MARK MONUMENT SHALL BE BRONZE SURVEY MONUMENT (SERVCO NO. 2135 OR APPROVED EQUAL. AVAILABLE AT: SERVCO, 2942 CENTURY PLACE, COSTA MESA, CA. 92626.)

REVISION DATE		CITY OF FOWLER	STD.DWG.
4/10/01		BENCH MARK	M-10



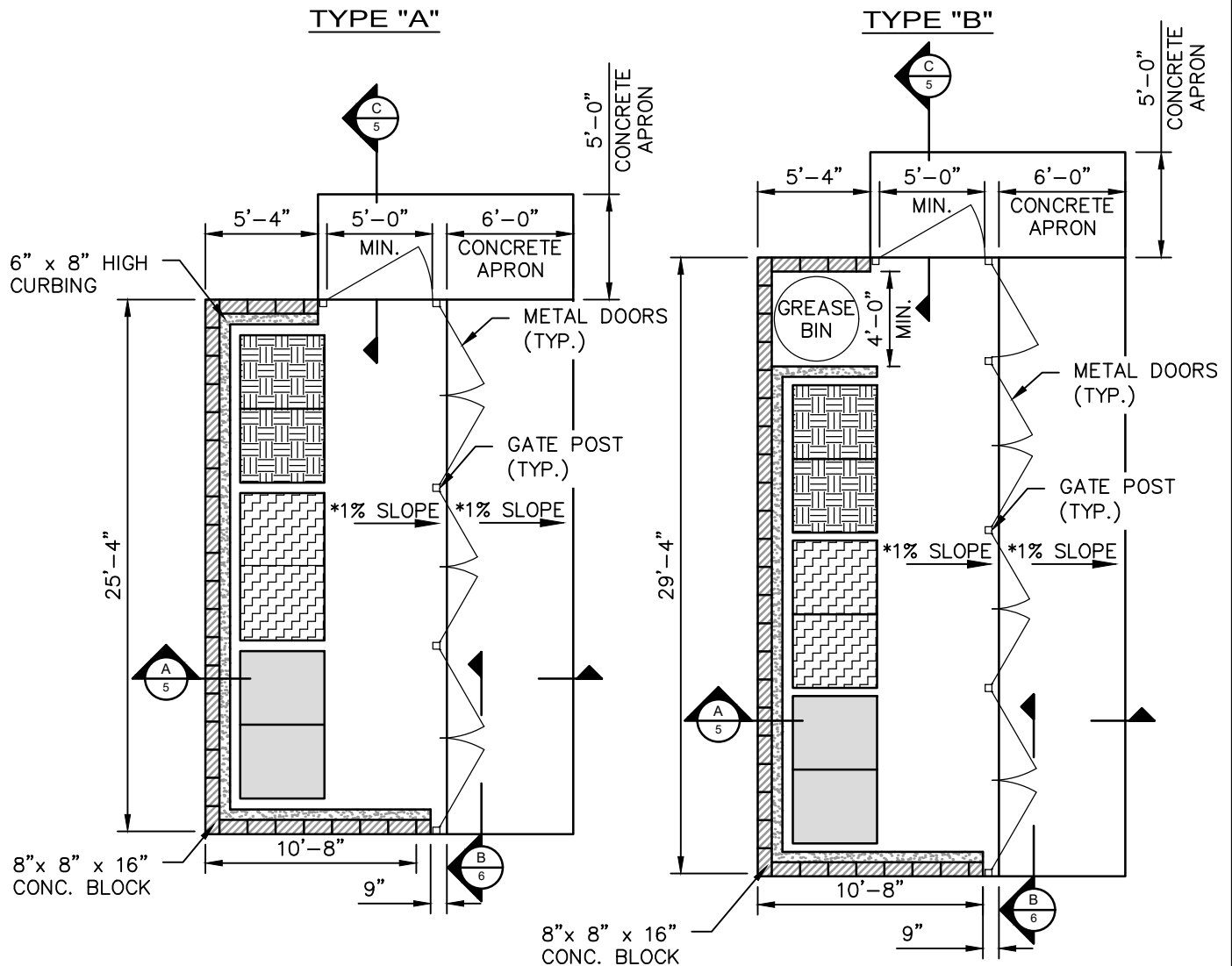
REVISION DATE		CITY OF FOWLER	STD.DWG.
4/10/01		TRENCH BACKFILL & SURFACE REPLACEMENT	M-11

GENERAL NOTES AND SPECIFICATIONS:

1. ALL CONSTRUCTION SHALL COMPLY WITH THE CALIFORNIA BUILDING CODES.
2. GROUT ALL CELLS CONTAINING REINFORCED STEEL.
3. ALL MASONRY UNITS SHALL COMPLY WITH THE LATEST ADOPTED CALIFORNIA BUILDING CODE, ATSM C-90, GRADE N.
4. ALL MASONRY DEVELOPMENT SHALL BE INSPECTED BY THE CITY OF FOWLER DEVELOPMENT DEPARTMENT.
5. DEPTHS OF FOOTINGS ARE INTO NATURAL UNDISTURBED SOIL OR TESTED AND APPROVED COMPACTED FILL.
6. REINFORCING STEEL SHALL BE DEFORMED BARS, MINIMUM GRADE 40.
7. FOOTING CONCRETE SHALL BE A MINIMUM 2500 PSI AT 28 DAYS.
8. MORTAR SHALL BE TYPE-S (MINIMUM 1800 PSI AT 28 DAYS).
1 (1) PART TYPE 1 CEMENT.
ONE HALF (1/2) PART LIME PUTTY OR HYDRATED LIME.
FOUR AND ONE HALF (4 1/2) PARTS SAND (MAXIMUM).
9. GROUT SHALL BE A MINIMUM 2000 PSI AT 28 DAYS.
ONE (1) PART CEMENT.
THREE (3) PARTS SAND.
TWO (2) PARTS PEA GRAVEL.
10. EARTH COLORED MATERIALS SHALL BE USED WHERE RESIDENTIAL AREAS ARE AFFECTED.
11. FINISH PAD ELEVATION TO BE FLUSH WITH GRADE AT ACCESS PAVEMENT.
12. ANY GATE HINGES SHOULD BE LOCATED ON THE OUTSIDE.
13. METAL DOORS ARE REQUIRED ON ALL ENCLOSURES, CHAIN LINK IS NOT ACCEPTABLE.
14. 8" CONCRETE BLOCK TO BE USED FOR WALLS.
15. CONTRACTOR SHALL VERIFY SIZE OF OPENING IN FIELD.
16. ACCESSIBLE DOORS AND GATES SHALL COMPLY WITH CBC 11B-404.2.7 & 404.2.8, 404.2.9.
17. ACCESSIBLE ROUTE REQUIREMENTS SHALL COMPLY WITH CBC 11B-206.1 & 11B-206.2.2.
18. TRASH ENCLOSURE TYPE AS APPROVED BY THE CITY. MODIFICATIONS TO MEET SITE CONSTRAINTS MAY BE APPROVED BY CITY ENGINEER.

REVISION DATE		CITY OF FOWLER	STD.DWG.
04/10/01	12/26/23	COMMERCIAL & INDUSTRIAL TRASH ENCLOSURE	M-12 1 OF 8

TRASH ENCLOSURE PLAN



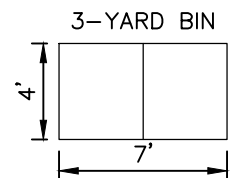
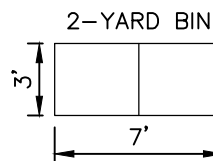
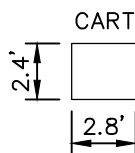
NOTES:

1. TRASH ENCLOSURE SIZE TO BE APPROVED BY CITY AND REFUSE HAULER.
2. GREASE BINS ARE REQUIRED FOR TRASH ENCLOSURE LOCATIONS THAT SERVE RESTAURANTS.
3. A GREENWASTE BIN IS REQUIRED FOR ALL LOCATIONS THAT PRODUCE ORGANIC WASTE PER SB 1383.

*CROSS SLOPES
NOT TO EXCEED
2% IN ANY
DIRECTION

LEGEND:

	TRASH
	RECYCLING
	GREENWASTE/ORGANICS

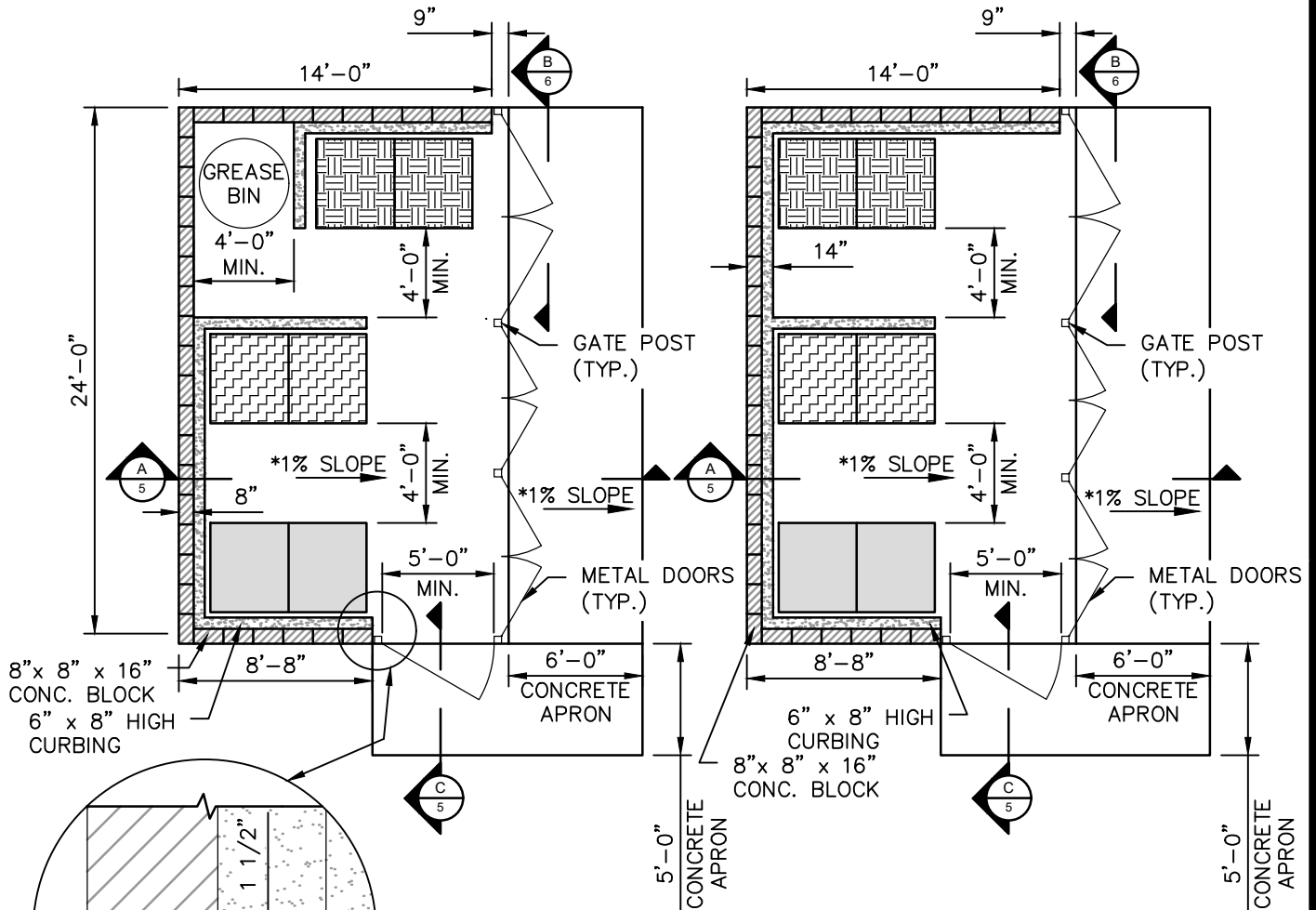


REVISION DATE		CITY OF FOWLER		STD.DWG.
04/10/01	12/26/23	COMMERCIAL & INDUSTRIAL TRASH ENCLOSURE		M-12
				2 OF 8

TRASH ENCLOSURE PLAN

TYPE "C"

TYPE "D"

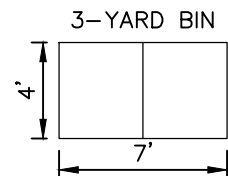
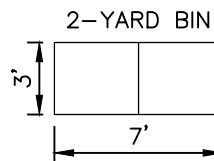
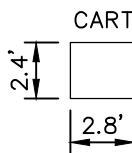


NOTES:

1. TRASH ENCLOSURE SIZE TO BE APPROVED BY CITY AND REFUSE HAULER.
2. GREASE BINS ARE REQUIRED FOR TRASH ENCLOSURE LOCATIONS THAT SERVE RESTAURANTS.
3. A GREENWASTE BIN IS REQUIRED FOR ALL LOCATIONS THAT PRODUCE ORGANIC WASTE PER SB 1383.

LEGEND:

	TRASH
	RECYCLING
	GREENWASTE/ORGANICS

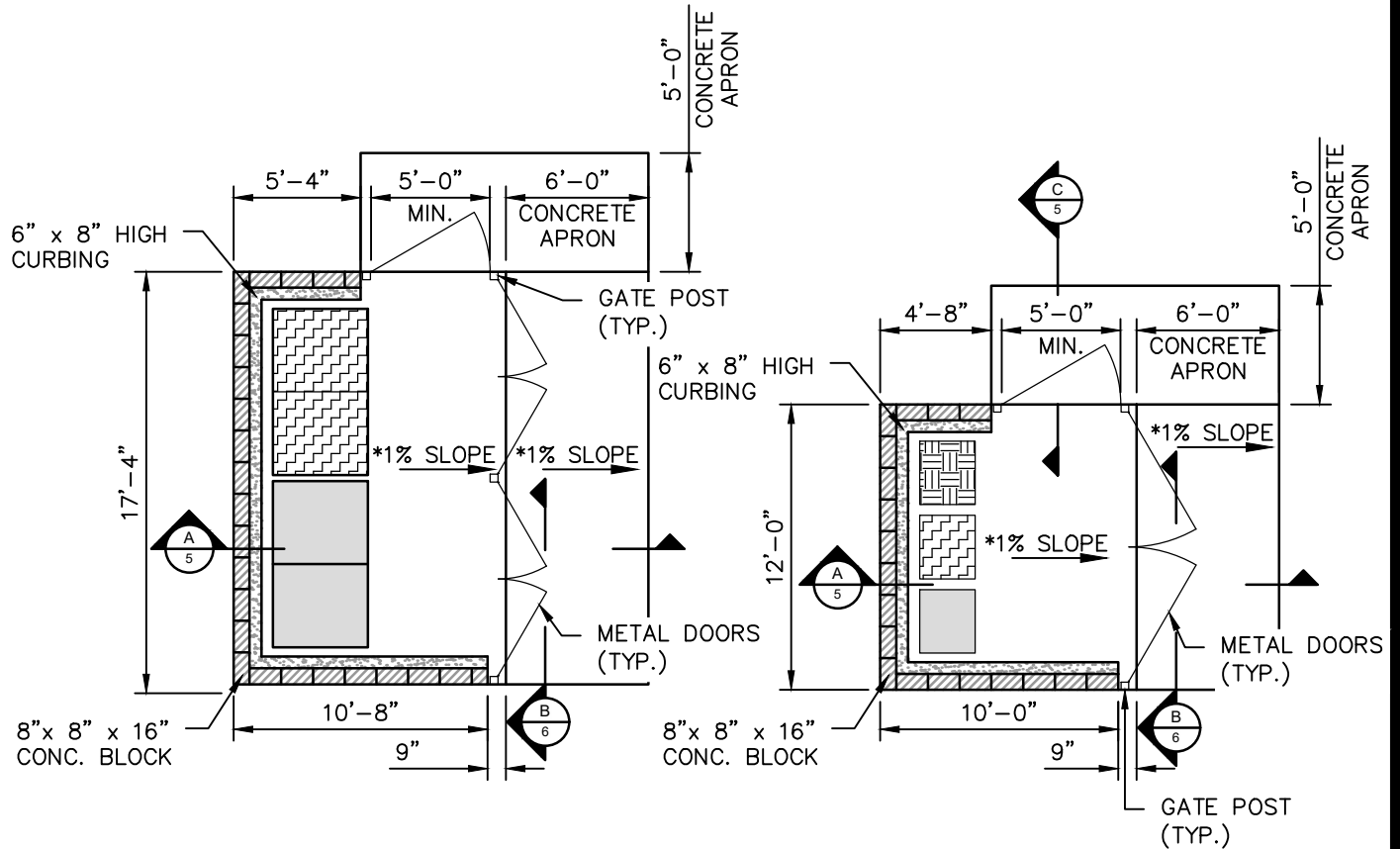


REVISION DATE		CITY OF FOWLER		STD.DWG.
04/10/01	12/26/23	COMMERCIAL & INDUSTRIAL TRASH ENCLOSURE		M-12
				3 OF 8

TRASH ENCLOSURE PLAN

TYPE "E"

TYPE "F"



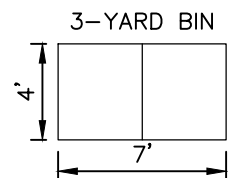
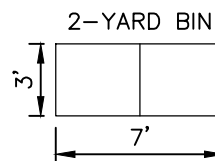
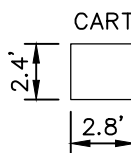
NOTES:

1. TRASH ENCLOSURE SIZE TO BE APPROVED BY CITY AND REFUSE HAULER.
2. GREASE BINS ARE REQUIRED FOR TRASH ENCLOSURE LOCATIONS THAT SERVE RESTAURANTS.
3. A GREENWASTE BIN IS REQUIRED FOR ALL LOCATIONS THAT PRODUCE ORGANIC WASTE PER SB 1383.

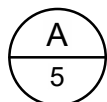
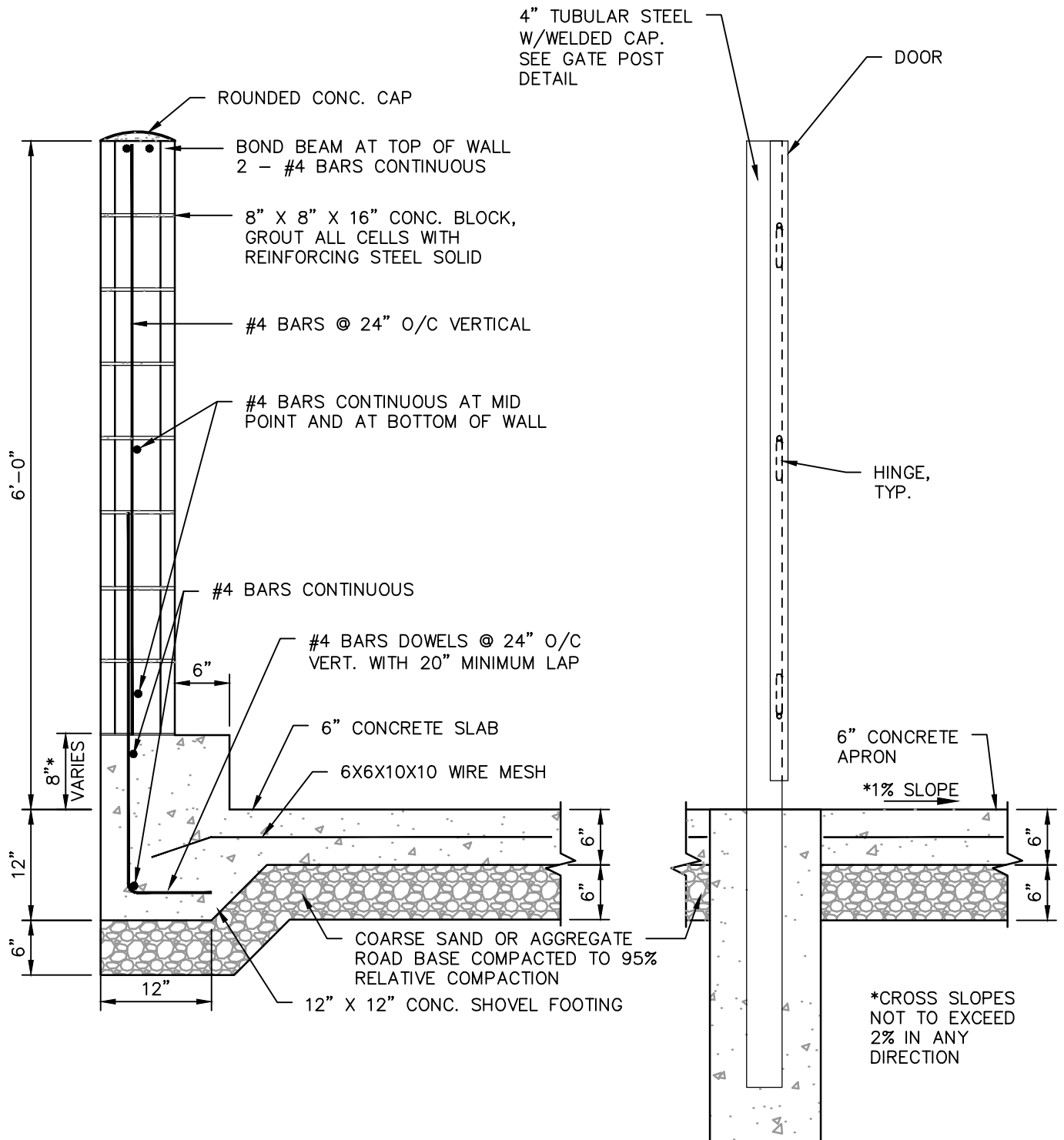
*CROSS SLOPES
NOT TO EXCEED
2% IN ANY
DIRECTION

LEGEND:

	TRASH
	RECYCLING
	GREENWASTE/ORGANICS



REVISION DATE		CITY OF FOWLER		STD.DWG.
04/10/01	12/26/23	COMMERCIAL & INDUSTRIAL TRASH ENCLOSURE		M-12
				4 OF 8

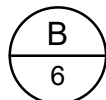
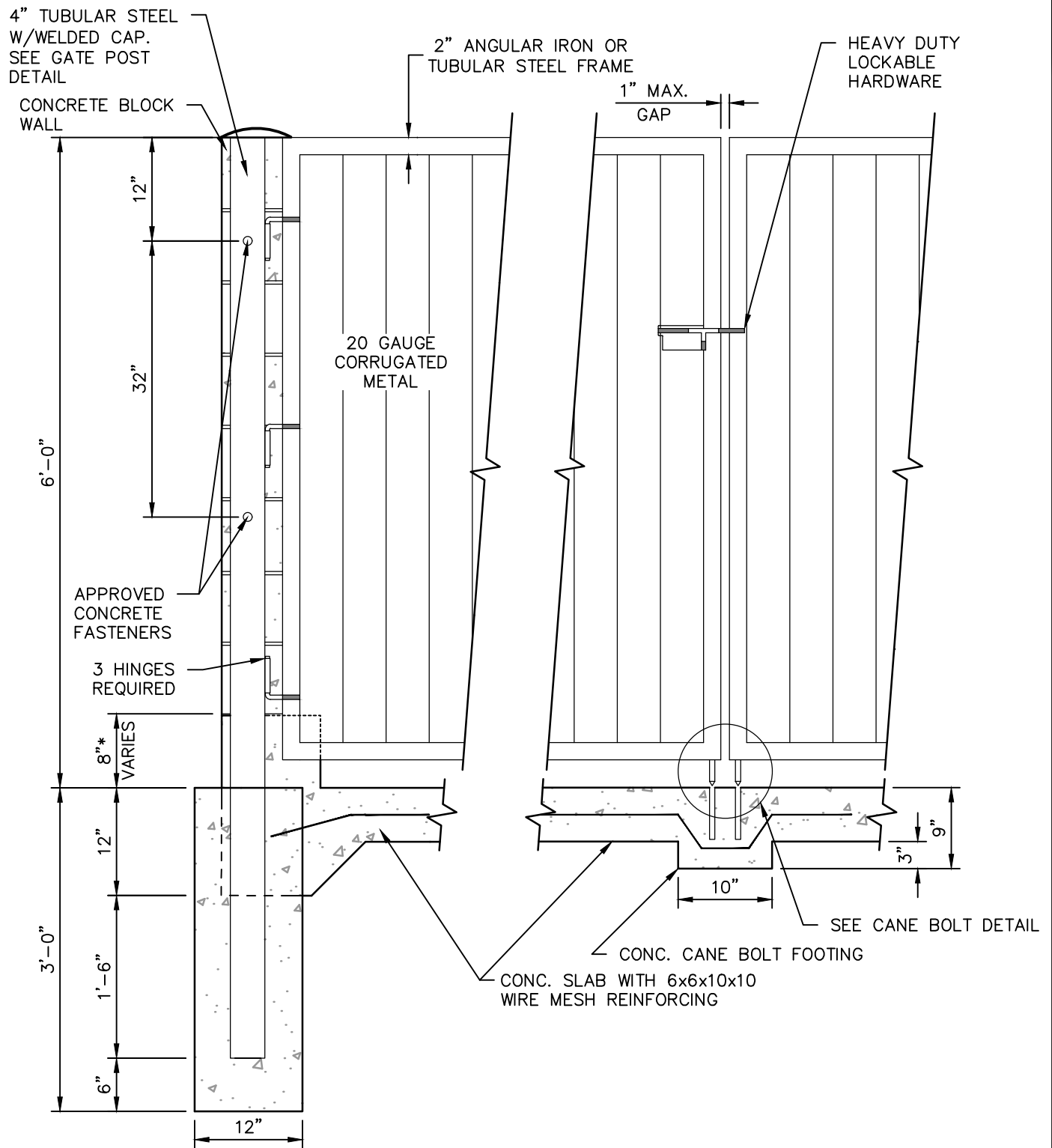


BLOCK WALL SECTION

*NOTE:

1. WALKWAY AND STEM WALL HEIGHT VARIES FROM 8" AT BACK OF STRUCTURE TO MAXIMUM OF 10" AT FRONT DEPENDING UPON FLOOR SLOPE.

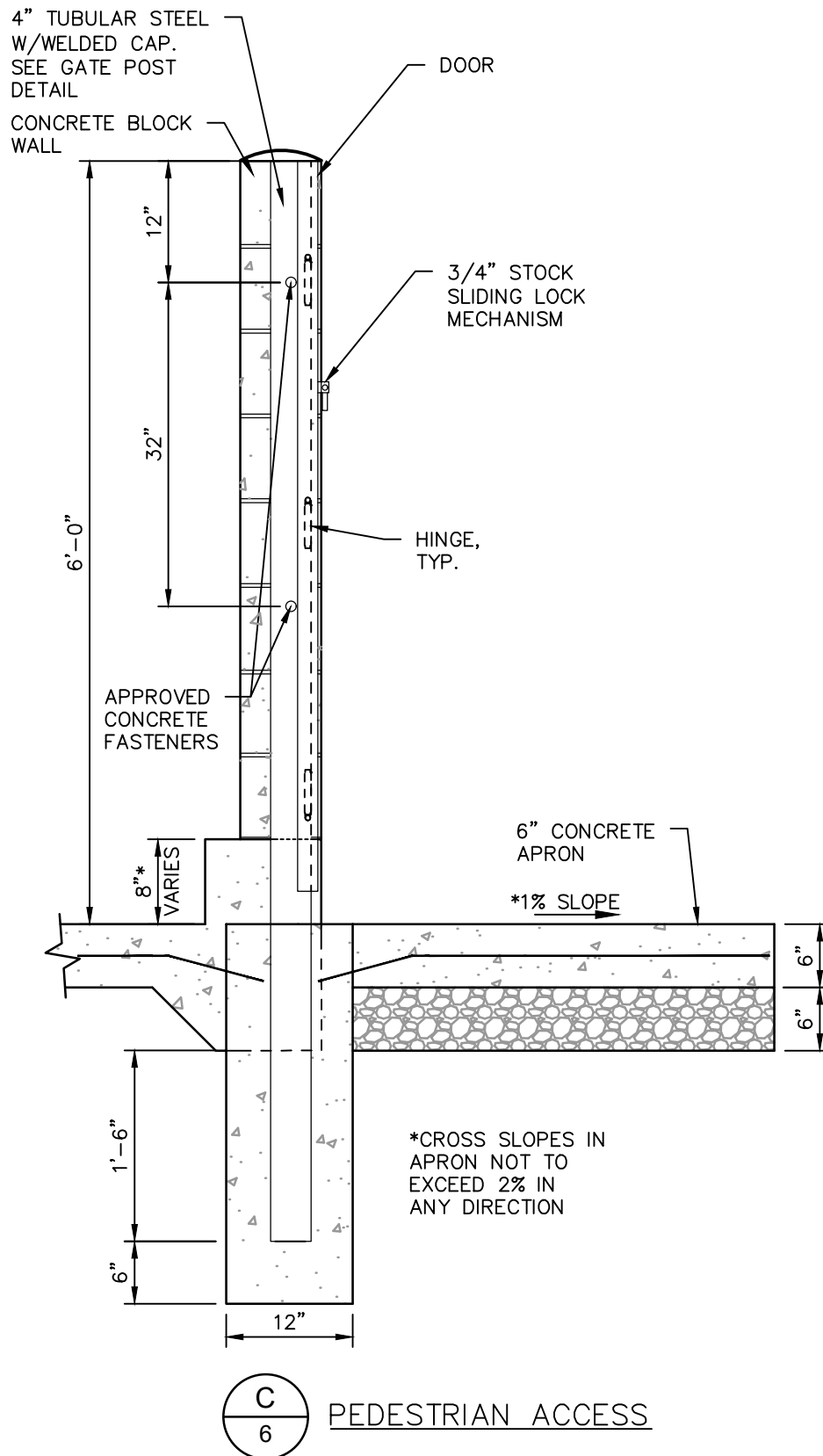
REVISION DATE		CITY OF FOWLER	STD.DWG.
04/10/01	12/26/23		
		COMMERCIAL & INDUSTRIAL TRASH ENCLOSURE	M-12
			5 OF 8



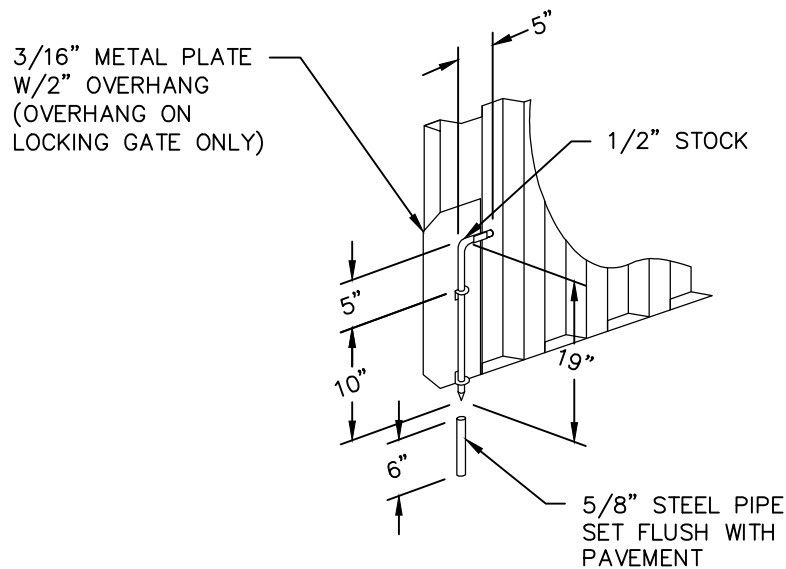
GATE SECTION

*SEE NOTE ON SHEET 5 OF 7

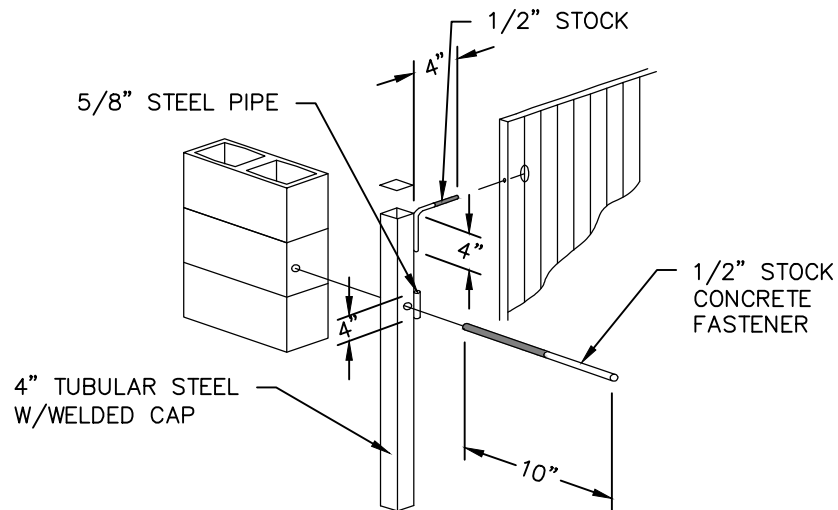
REVISION DATE		CITY OF FOWLER	STD.DWG.
04/10/01	12/26/23	COMMERCIAL & INDUSTRIAL TRASH ENCLOSURE	M-12
			6 OF 8



REVISION DATE		CITY OF FOWLER	STD.DWG.
04/10/01	12/26/23		
		COMMERCIAL & INDUSTRIAL TRASH ENCLOSURE	M-12
			7 OF 8



CANE BOLT DETAIL
(BOTH SIDES OF GATE)

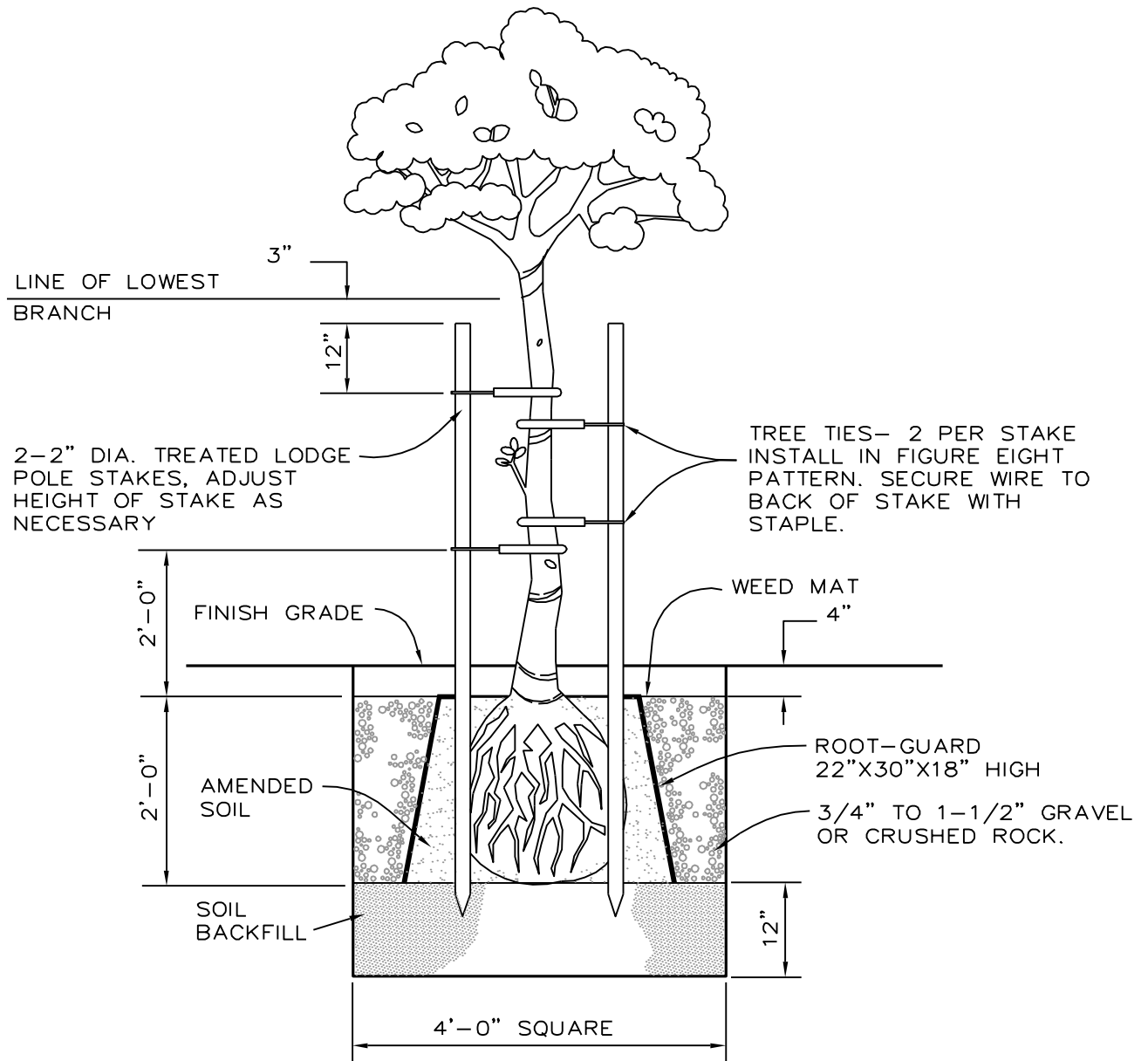


GATE POST DETAIL

NOTES:

1. GATES TO BE PAINTED TO MATCH BUILDING ACCENT FEATURES
2. DESIGN, ENGINEERING AND CONSTRUCTION NOT SPECIFICALLY NOTED SHALL BE IN ACCORDANCE WITH ACCEPTED INDUSTRY STANDARDS AND OF FIRST QUALITY.
3. SECONDARY CANE BOLT RETAINER TO BE PLACED FOR EACH GATE SUCH THAT GATE IS HELD IN A POSITIONS 90° TO THE CLOSED POSITION.
4. TWO GATES ARE REQUIRED ON EACH CELL WITH THE EXCEPTION OF THE GREASE BARREL CELL.

REVISION DATE		CITY OF FOWLER	STD.DWG.
04/10/01	12/26/23		
		COMMERCIAL & INDUSTRIAL TRASH ENCLOSURE	M-12
			8 OF 8



1. PROPERTY OWNERS, DEVELOPERS, CONTRACTORS, ENGINEERS & ARCHITECTS MAY PLANT ONLY THE TREES LISTED ON THE PARKWAY TREE LIST SEE DETAIL M-13 SHEET 2 OF 3.
2. FULL SPECIFICATIONS SHALL BE PROVIDED FOR CITY APPROVAL.

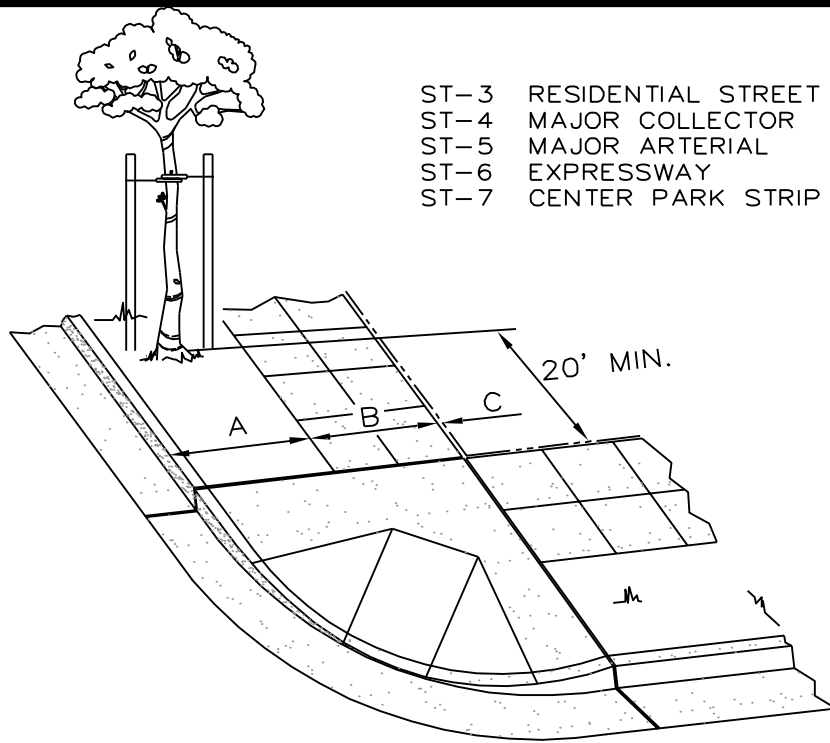
REVISION DATE		CITY OF FOWLER	STD.DWG.
4/10/01		STREET TREE PLANTING	M-13
			1 OF 3

CITY OF FOWLER TREE LIST

TYPE	SCIENTIFIC NAME	COMMON NAME
D	FRANXINUS OXYOARPA 'RAYWOOD'	PALO ALTO SWEET GUM
D	GINKGO BILOBA 'AUTUMN GOLD'	MAIDENHAIR TREE
D	KOELREUTERIA HENRYI	CHINESE FLAME TREE
D	KOELREUTERIA PANICULATA	GOLDENRAIN TREE
D	LIRIODENDRON TULIPIFERA	TULIP TREE
D	NYSSA SYLVATICA	SOUR GUM
D	PISTACIA CHINENSIS	CHINESE PISTACHE
D	PLATANUS ACERIFOLIA	LONDON PLANE TREE
EG	QUERCUS ILEX	HOLY OAK
D	QUERCUS RUBRA	RED OAK
EG	RHUS LANCEA	AFRICAN SUMAC
D	SAPIUM SEBIFERUM	CHINESE TALLOW TREE
D	ZELKOVA SERRATA	SAWLEAF ZELKOVA
EG	QUERCUS VIRGINIANA	SOUTHERN LIVE OAK
EG	CINNAMOMUM	CAMPHOR TREE
D	LAGERSTROEMIA CULTIVARS	CRAPE MYRTLE
D	LAURUS NOBILIS	BAY LAUREL TREE
D	QUERCUS COCCINEA	SCARLET OAK
D	ARBUTUS 'MARINA'	MARINA STRAWBERRY
D	CHIONANTHUS RETUSUS	CHINESE FRINGE TREE
D	ULMUS PARVIFOLIA	CHINESE ELM
D	ACER RUBRUM 'OCTOBER GLORY'	SCARLET MAPLE
EG	QUERCUS SUBER	CORK OAK
EG	CEDRUS DEODARA	DEODAR CEDAR
EG	QUERCUS AGRIFOLIA	COAST LIVE OAK
EG	CUPRESSACEAE	ITALIAN CYPRESS
D	SAPINDACEAE	REDPOINTE MAPLE
D	ACER FREEMANII	AUTUMN BLAZE MAPLE

D = DECIDUOUS
EG= EVERGREEN

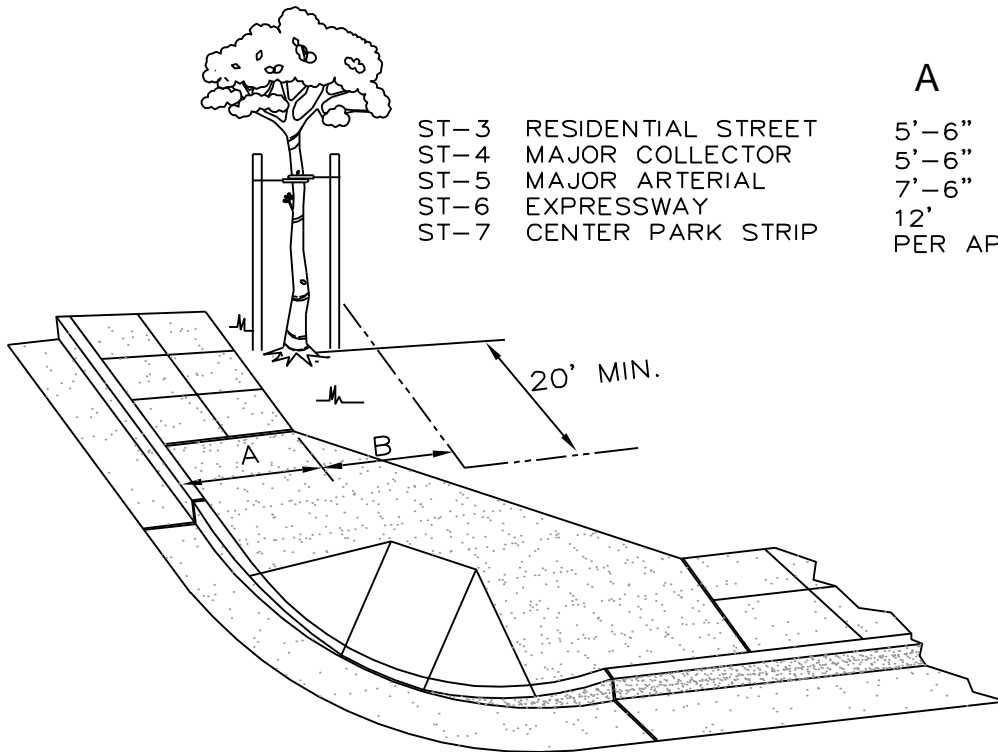
REVISION DATE		CITY OF FOWLER	STD.DWG.
3/20/20		STREET TREE PLANTING	M-13
			2 OF 3



ST-3 RESIDENTIAL STREET
ST-4 MAJOR COLLECTOR
ST-5 MAJOR ARTERIAL
ST-6 EXPRESSWAY
ST-7 CENTER PARK STRIP

A	B	C
4'-6"	5'	6"
4'-6"	5'	6"
NOT APPLICABLE		
6'-6"	5'	6"
PER APPLICABLE CONDITIONS		

CURB, GUTTER AND SIDEWALK WITH PARK STRIP

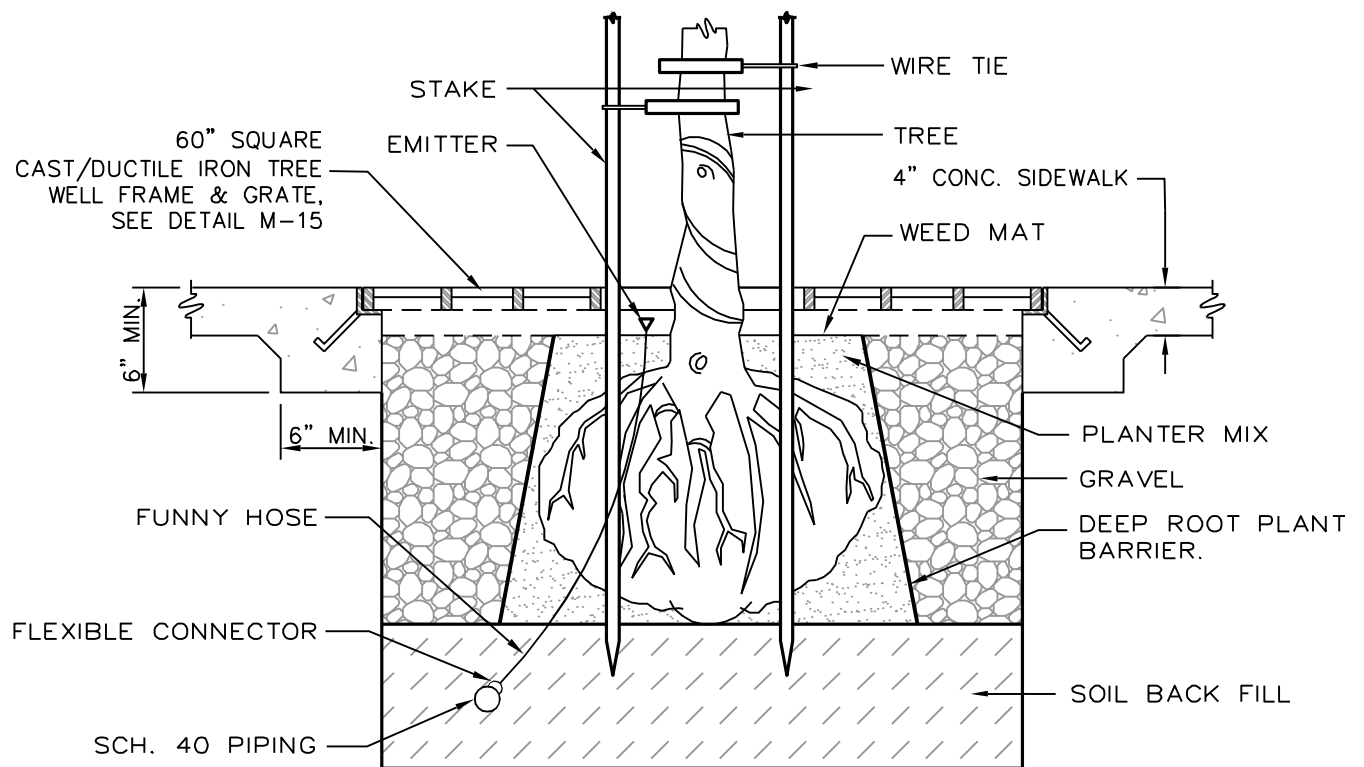


ST-3 RESIDENTIAL STREET
ST-4 MAJOR COLLECTOR
ST-5 MAJOR ARTERIAL
ST-6 EXPRESSWAY
ST-7 CENTER PARK STRIP

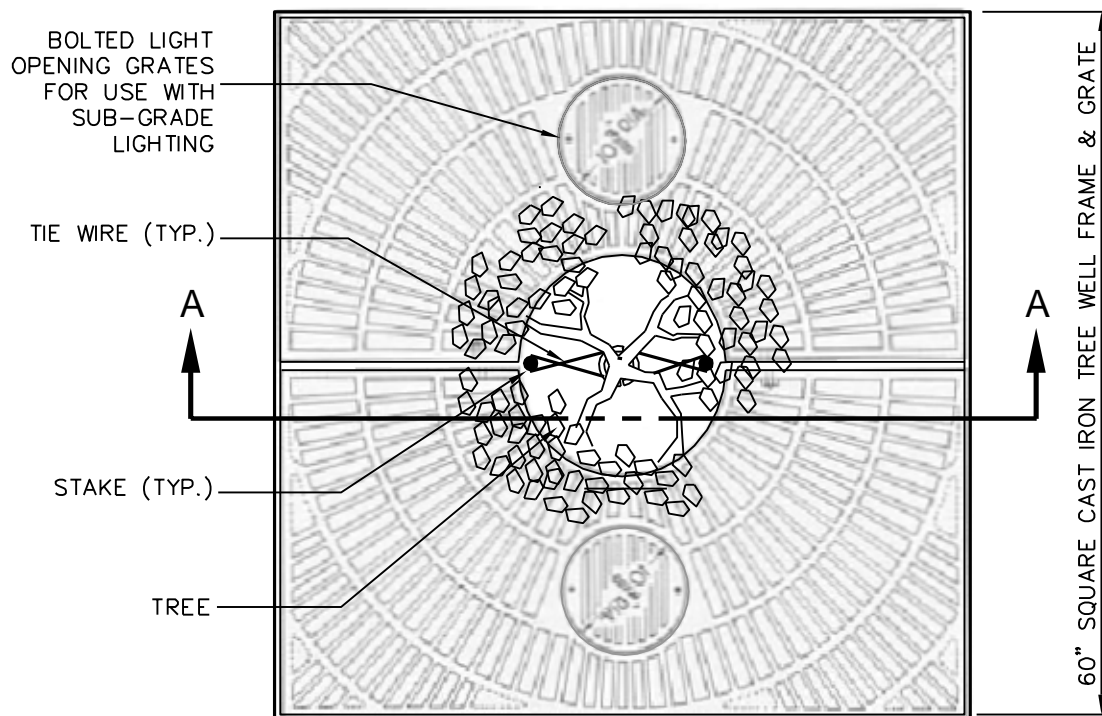
A	B
5'-6"	4'-6"
5'-6"	4'-6"
7'-6"	6"
12'	---
PER APPLICABLE CONDITIONS	

CURB AND GUTTER WITH MONOLITHIC SIDEWALK

REVISION DATE		CITY OF FOWLER	STD.DWG.
4/10/01		STREET TREE PLANTING	M-13
			3 OF 3



SECTION A-A



PLAN VIEW

NOTES:

1. SEE SPECIFICATIONS SECTION 26.
2. SEE TREE LIST STD. DWG. M-13 SHEET 2 OF 3.
3. SEE TREE WELL STD. DWG. M-13 SHEETS 1 OF 3 AND 3 OF 3.

REVISION DATE		CITY OF FOWLER	STD.DWG.
4/10/01		COMMERCIAL TREE WELL WITH AUTOMATIC IRRIGATION SYSTEM	M-14
6/19/07			

ELEVATION

SECTION



NOTES:

1. Concrete mix design to include a mixture of Portland Cement, water, coarse and fine aggregates, pure mineral oxide coloring agents (when applicable) to yield a minimum compressive strength of 5000 psi.
2. Final product shall be reinforced with #4 and #5 rebar grid.
3. Product is cast in 1-piece with no assembly required.
4. Sign shall be ordered from Outdoor Creations or approved equal
5. Cut-sheet of sign must be approved by City Engineer and Public Works Director prior to order.

*Paint colors: White

Dark Blue: PPG 1167-7 Blue Jewel

Gold (non-metallic): PPG 1214-6 Indian Maize

Red: Standard Red 1

Green: PPG 1132-7 Brunswick

Orange: P&L 11-12 Nectarine Juice

Reddish Brown: PPG 16-08 Antique Mahogany

WEIGHT: 2400 LBS

TEXTURE: Smooth

COLOR: TBD

SEALER: Standard Acrylic

REVISION DATE

1/27/22

CITY OF FOWLER

STD. DWG.

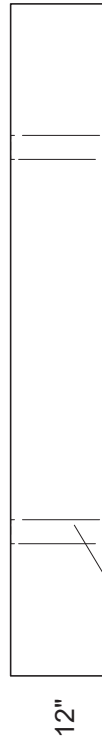
PRE-CAST CONCRETE PARK SIGN

M -16

SECTION

Minimum below grade
Add height needed above grade

48" O.C.



12"

84"

ELEVATION

3" grout pockets



12"

24"

NOTES

1. Cast (2) mounting thru holes (grout pockets) minimum diameter 3", in footing as shown.
2. Insert pipe (supplied with sign) into holes in bottom of sign.
3. Fill grout pockets with liquid grout cement and lower sign onto footing, using epoxy between sign and footing for final anchoring.

24"



84"

PLAN

INSTRUCTIONS FOR SIGNS WITH BASE (PIPE MOUNT)

- 1) Pour a concrete footing per detail. (See this sheet) Make sure it is flat and level.
- 2) Set pipes (shipped with sign), into footing grout pockets. Do not use mortar yet as a "dry run" installation recommended.
- 3) Set sign over pipes and square up to footing.
- 4) Place sign on pipes. Do not epoxy yet as a "dry run" to check for proper fit is recommended.
- 5) If sign installed properly then can proceed to permanent installation that includes application of mortar/epoxy.
- 6) Remove sign and pipes. Mix mortar and fill grout pockets $\frac{3}{4}$ full with mortar.
- 7) Apply construction epoxy between footing and base.
- 8) Reinstall pipe
- 9) Place sign on pipes and prior to contact with footing apply a thick bead of construction epoxy that runs in the center of the footing (use pipes as guideline) the length of the sign itself.
- 10) Make any fine tuning adjustments to the sign as needed by use of shims while epoxy/mortar is setting.
- 11) Use rags/towels to clean up any epoxy that may squeeze out from under the sign as sign settles on base.

REVISION DATE

1/27/22

CITY OF FOWLER

PRE-CAST CONCRETE PARK
SIGN FOOTING

STD. DWG.

M -17